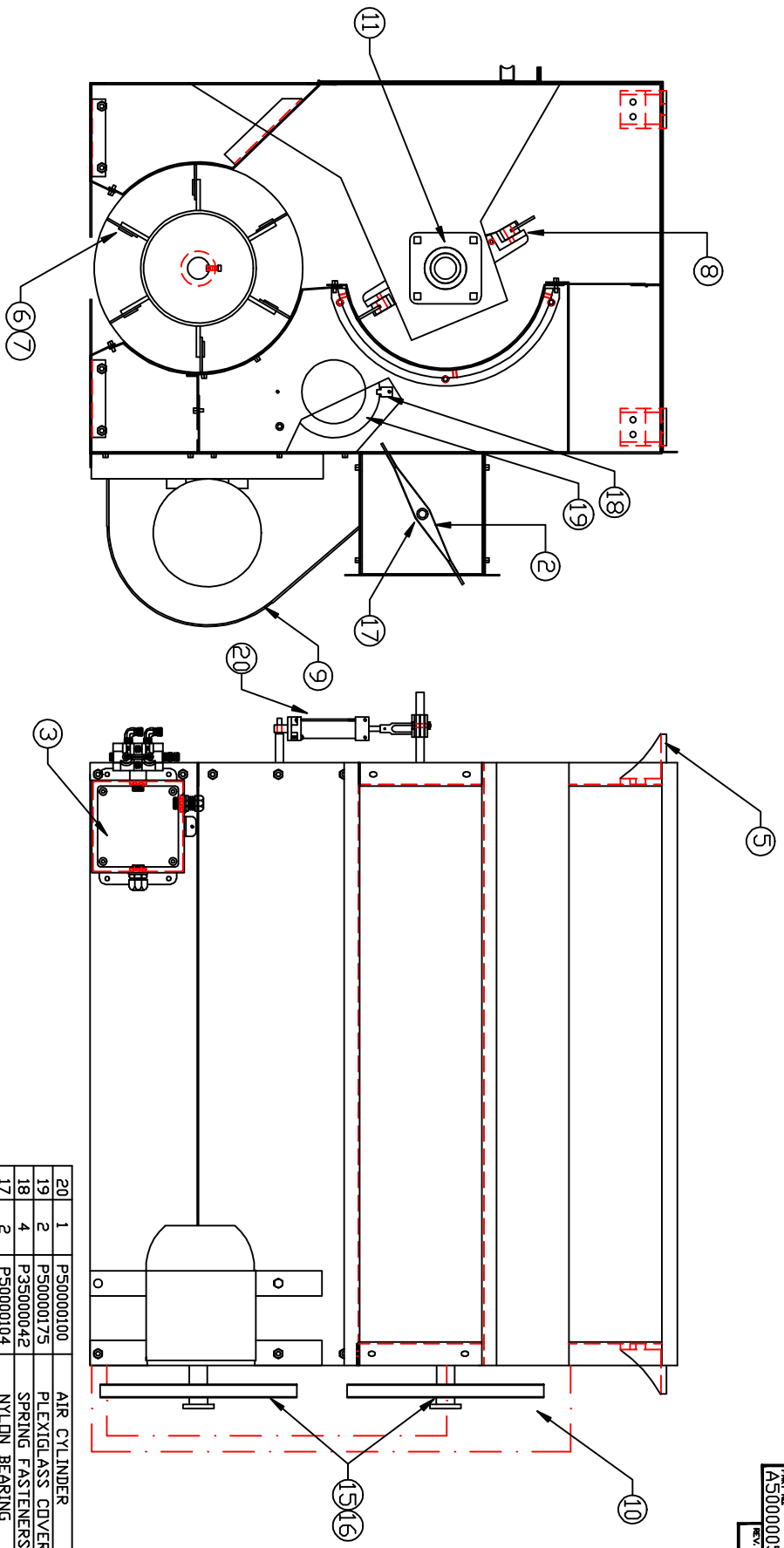


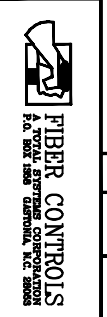
PART NO. A50000053
REV.



ITEM	QTY	RECD.	PART NO.	DESCRIPTION
20	1		P50000100	AIR CYLINDER
19	2		P50000175	PLEXIGL ASS COVER
18	4		P35000042	SPRING FASTENERS
17	2		P50000104	NYLON BEARING
16	2		P20000008	H-1 7/16" BUSHING
15	2		P19000156	BK130H SHEAVE
14	-		---	---
13	-		---	---
12	-		---	---
11	2		P16000039	VCI 1 7/16" BEARING
10	1		S50000350	D-106 GUARD
9	1		P50000309	MOTOR COVER
8	1		S50000581	FLAT DIFFER ASS'Y 36"
7	6		F50000195	NEOPRENE BLADE HOL DER
6	6		F50000192	NEOPRENE BLADE
5	4		F50000224	HANGING BRACKET
4	-		---	---
3	1		S50000766	CONTROL BOX ASS'Y
2	1		S50000200	AIR VALVE ASS'Y
1	1		S50000494	D-106 SUB ASS'Y

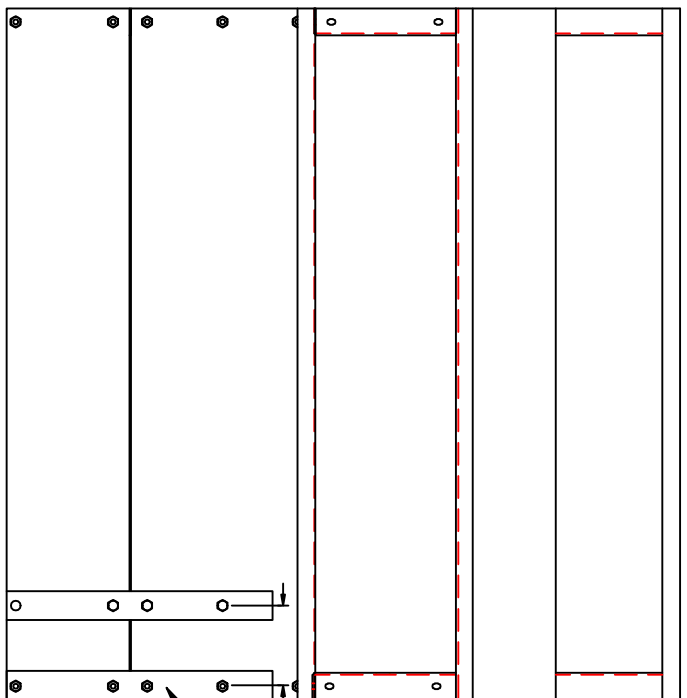
FILE: TOLERANCES UNLESS OTHERWISE SPECIFIED
 FRACTIONAL & DECIMAL: 2=1
 HOLE: 2=1
 DRAWN BY: JDM
 DATE: 8-1-97

MTL: FRESH

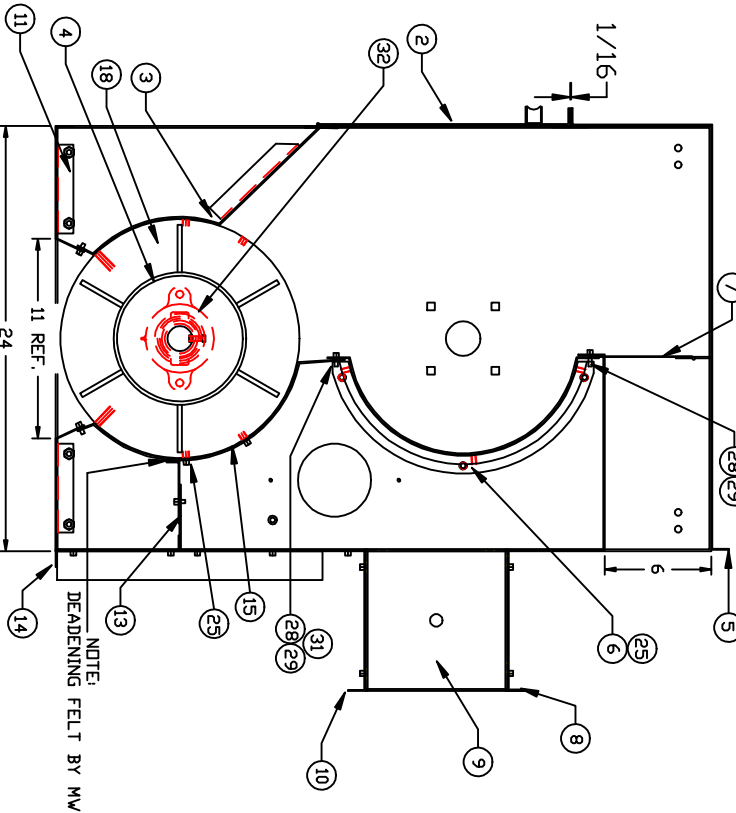


NAME: 36"
 D-106 MAIN ASSEMBLY
 PART NO. A50000053

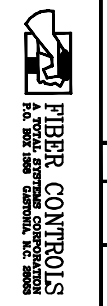
PART NO
S50000494
REV.



QTY	PART NO	DESCRIPTION
2	P50000450	BEARING HOUSING ASSY
2	P38620004	1/4" LOCK WASHER
14	P38680612	13/16 X 3/8" PDP RIVET
52	P38500420	1/4"-20 HEX NUT
40	P38400408	1/4"-20X1/2" HH CAP SCR
14	P38400412	1/4"-20X3/4" HH CAP SCR
26	P38860412	3/8"-16X1/2" HH CAP SCR
24	P38400608	3/8"-16X1 1/2" HH CAP SCR
6	P38400624	D-106 LH PANEL
23	F50000492	LH DDDR LATCH
22	F50000159	
21	F50000160	
20	P38620006	RH DDDR LATCH
19	P38620006	3/8" LOCK WASHER
18	S50000451	DIFFER HEAD
17	P38580420	1/4"-20 LOCK NUT
16	P38870408	1/4"-20X1/2" BH SDC SCR
15	F50000530	EXT. DIFFER COVER
14	F50000170	FILE IN
13	F50000323	EXT. DIFFER COVER BRACE
12	F72000146	POWER STROT
11	S50000526	FILE IN ASSEMBLY
10	F50000162	BACK COVER
9	F50000161	BATTLE BOX END
8	F50000547	MAT'L SLIDE ASSY
7	S50000234	INLET DAMPER DDDR
6	S50000376	INTERNAL SCREEN ASSY
5	S50000249	TOP COVER ASSY
4	S50000313	EXT. DIFFER ASSY
3	S50000343	EXT. DIFFER COVER
2	S50000159	DDDR ASSEMBLY
1	S50000519	D-106 RS PANEL ASSY



FILE	TOLERANCES UNLESS OTHERWISE SPECIFIED
FR.	FRACTIONAL & DECIMAL S
ANG.	ANGLES & SLOPE 2=1
DR.	DRILLING
COL.	DATE 5/21/81



NAME	D-106 SUB ASSEMBLY
MOCK	PART NO S50000494
DATE	