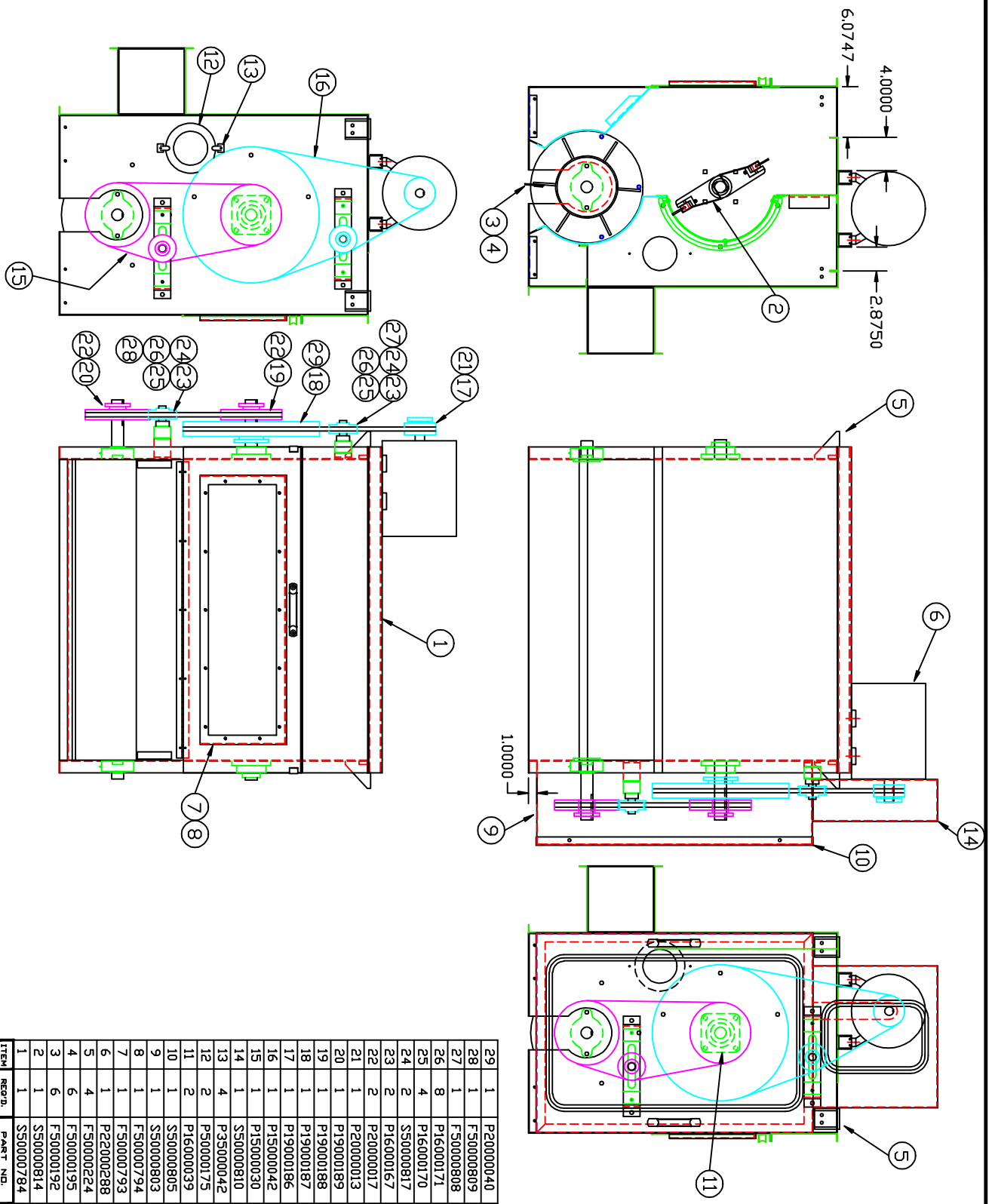


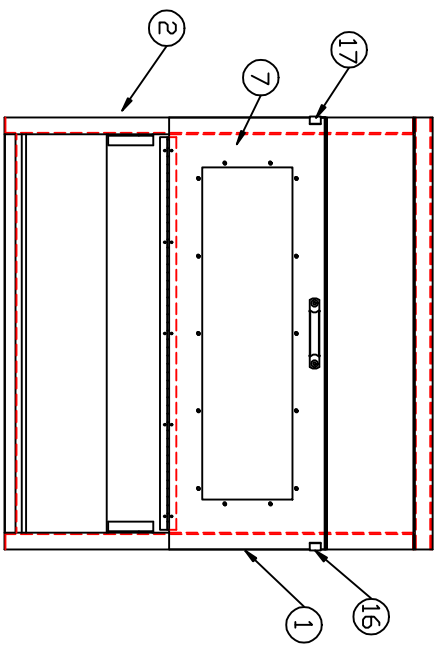
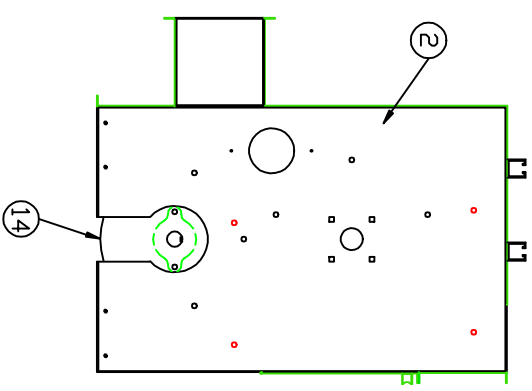
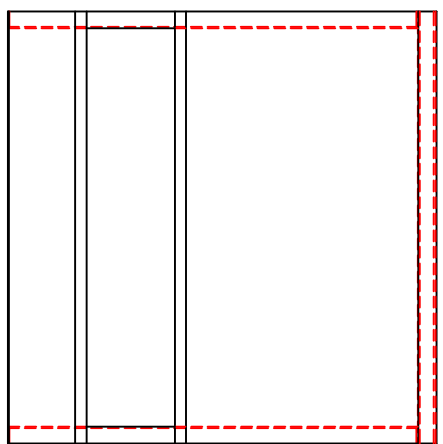
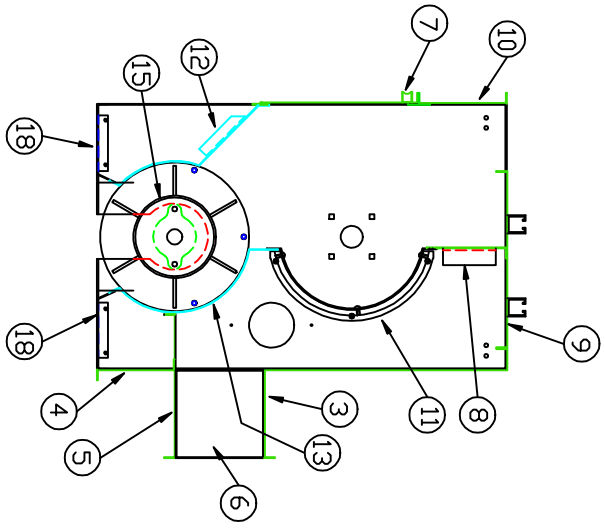
PART NO. A5000056
REV.



ITEM	REQ'D.	PART NO.	DESCRIPTION
29	1	P20000040	Q1-1 7/16 BUSHING
28	1	F50000809	SPACER PLATE TALL
27	1	F50000808	SPACER PLATE SHORT
26	8	P16000171	TTC-1423 THRUST WASHER
25	4	P16000170	N1A-1423 NEEDLE ROLLER
24	2	S50000817	IDLER SHEAVE ASS'Y
23	2	P16000167	BELT TENSIONERS (7/8)
22	2	P20000017	P1-1 7/16 BUSHING
21	1	P20000013	P1-1 1/8 BUSHING
20	1	P19000189	1TB74 BROWNING SHEAVE
19	1	P19000188	1TB70 BROWNING SHEAVE
18	1	P19000187	1TB160 BROWNING SHEAVE
17	1	P19000186	1TB34 BROWNING SHEAVE
16	1	P15000042	B68 BELT
15	1	P15000030	B53 BELT
14	1	S50000810	MOTOR GUARD ASS'Y
13	4	P35000042	SPRING FASTENER
12	2	P50000175	PLEXIGLASS COVER
11	2	P16000039	VCI 1 7/16 BEARING
10	1	S50000805	GUARD DODR ASS'Y
9	1	S50000803	DRIVE GUARD ASS'Y
8	1	F50000794	3/8 LEXAN WINDOW
7	1	F50000793	WINDOW FRAME
6	1	P22000288	1hp 900-rpm 182T MOTOR
5	4	F50000224	HANGING BRACKET
4	6	F50000195	BLADE HOLDER
3	6	F50000192	NEOPRENE BLADE
2	1	S50000814	36" FLAT DODFER ASS'Y
1	1	S50000784	SUB ASS'Y

LETTER	REVISION	REV BY	DATE
FILE	TOLERANCES UNLESS OTHERWISE SPECIFIED		
DATE	FRACTIONAL & DECIMAL & ANGLES		
APP	TOLERANCE SCALE 1/8=1		
CHK	DRAWN BY JDM		
DES	DATE 8-1-99		
MFG	MATERIAL		
FINISH	FINISH		
FIBER CONTROLS			
A FIBER SPINNING CORPORATION P.O. BOX 399 GROTON, CT 06340			
NAME	D-106 x 36"		
MOCK	TDP INLET ASS'Y		
MA	PART NO. A5000056		

PART NO.
S50000784
REV.



ITEM	REQ'D.	PART NO.	DESCRIPTION
18	2	S50000342	FILL-IN ASS'Y
17	1	F50000159	LH DDDR LATCH
16	1	F50000160	RH DDDR LATCH
15	1	S50000815	EXT. DODFER ASS'Y
14	2	S50000451	DODFER HEAD
13	1	F50000493	EXT. DODFER SCREEN
12	1	S50000343	EXT. DODFER COVER
11	1	S50000376	INT. SCREEN ASS'Y
10	1	S50000807	TOP FRONT COVER
9	1	S50000799	TOP COVER ASS'Y
8	1	S50000796	INT. FILL-IN ASS'Y
7	1	S50000792	CLEAN OUT DDDR ASS'Y
6	2	F50000790	BAFFLE BOX
5	1	F50000787	BOTTOM BACK COVER
4	1	F50000786	BOTTOM COVER
3	1	F50000785	TOP BACK COVER
2	1	S50000806	LH SIDE PANEL
1	1	F50000789	RH SIDE PANEL

LETTER: _____ REVISION: _____ REV. BY: _____ DATE: _____

FILE: _____ TITLE: TOLERANCES UNLESS OTHERWISE SPECIFIED
 PART: _____ FUNCTION & SERIAL: _____
 DATE: _____ DRAWN BY: JDM SCALE: 1/8"=1"
 DCA DATE: 8-1-99

MFG. PART: _____

FIBER CONTROLS
 A FIBER OPTICS CORPORATION
 P.O. BOX 3000 GAITHERSBURG, MD 20878

NAME: D-106 x 36"
 MODEL: TDP INLET SUB-ASS'Y
 PART NO.: A50000056
 MAN. DISP. BY: S50000784