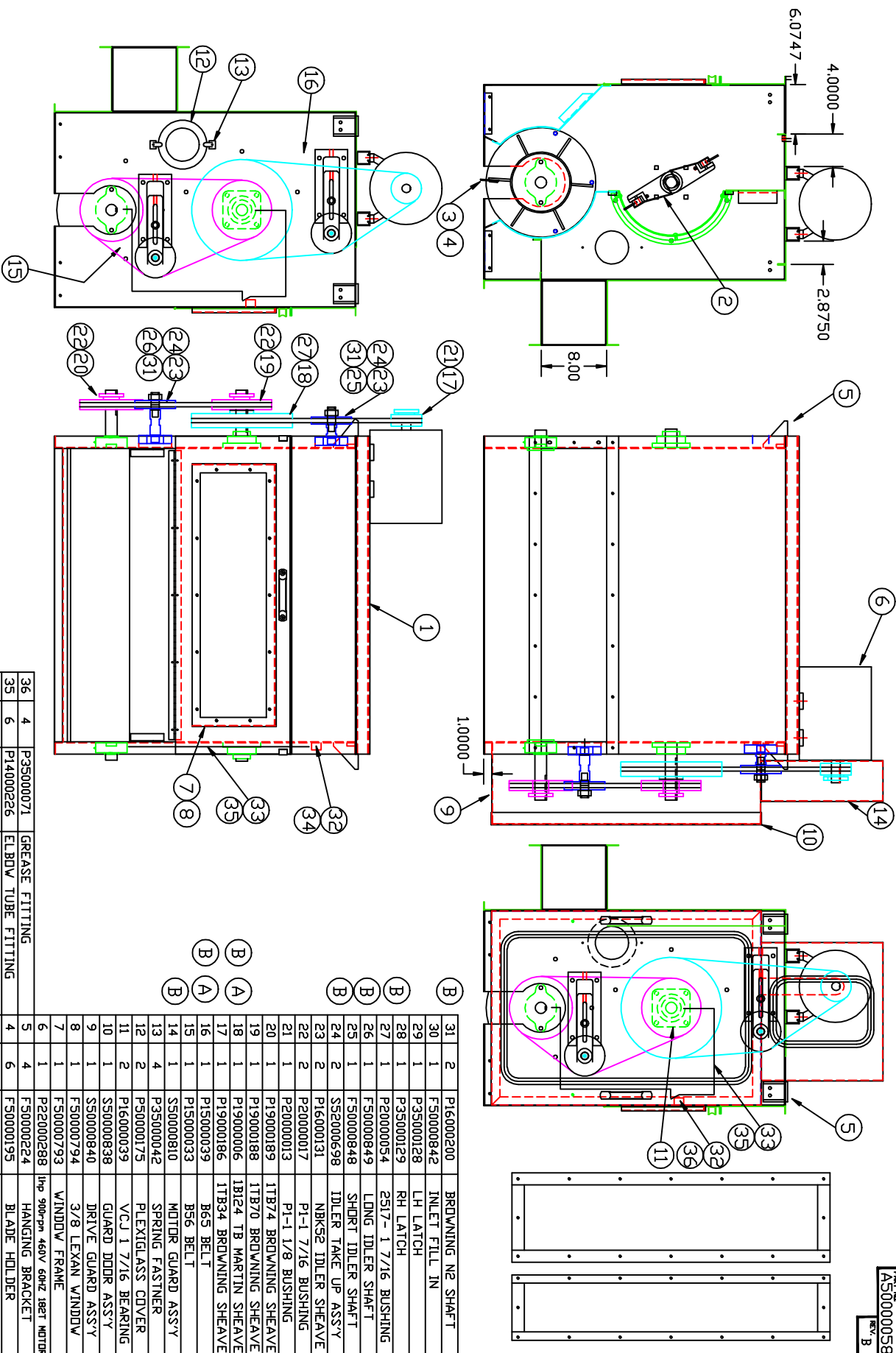


PART NO. A50000058  
REV. B



ITEM	REV'D	PART NO.	DESCRIPTION	ITEM	REV'D	PART NO.	DESCRIPTION
31	2	P16000200	BROWNING N2 SHAFT	31	2	P20000017	P1-1 7/16 BUSHING
30	1	F50000842	INLET FILL IN	20	1	P20000013	P1-1 1/8 BUSHING
29	1	P35000128	LH LATCH	19	1	P19000188	1TB74 BROWNING SHEAVE
28	1	P35000129	RH LATCH	18	1	P19000006	1B124 TB MARTIN SHEAVE
27	1	P20000054	2517-1 7/16 BUSHING	17	1	P190000186	1TB34 BROWNING SHEAVE
26	1	F50000849	LONG IDLER SHAFT	16	1	P15000039	B65 BELT
25	1	F50000848	SHORT IDLER SHAFT	15	1	P15000033	B56 BELT
24	2	SS2000698	IDLER TAKE UP ASSY	14	1	SS0000810	MOTOR GUARD ASSY
23	2	P16000131	NBK52 IDLER SHEAVE	13	4	P35000042	SPRING FASTNER
22	2	P20000017	P1-1 7/16 BUSHING	12	2	P50000175	PLEXIGLASS COVER
21	1	P20000013	P1-1 1/8 BUSHING	11	2	P16000039	VCLJ 1 7/16 BEARING
20	1	P19000189	1TB74 BROWNING SHEAVE	10	1	SS0000838	GUARD DOOR ASSY
19	1	P19000188	1TB70 BROWNING SHEAVE	9	1	SS0000840	DRIVE GUARD ASSY
18	1	P19000006	1B124 TB MARTIN SHEAVE	8	1	F50000794	3/8 LEXAN WINDOW
17	1	P190000186	1TB34 BROWNING SHEAVE	7	1	F50000793	WINDOW FRAME
16	1	P15000039	B65 BELT	6	1	P22000288	1hp 900rpm 460v 60hz 18BT MOTOR
15	1	P15000033	B56 BELT	5	4	F50000224	HANGING BRACKET
14	1	SS0000810	MOTOR GUARD ASSY	4	6	F50000195	BLADE HOLDER
13	4	P35000042	SPRING FASTNER	3	6	F50000192	NEOPRENE BLADE
12	2	P50000175	PLEXIGLASS COVER	2	1	SS0000814	36" FLAT DEFER ASSY
11	2	P16000039	VCLJ 1 7/16 BEARING	1	1	SS0000831	DSPREY SUB ASSY
10	1	SS0000838	GUARD DOOR ASSY				
9	1	SS0000840	DRIVE GUARD ASSY				
8	1	F50000794	3/8 LEXAN WINDOW				
7	1	F50000793	WINDOW FRAME				
6	1	P22000288	1hp 900rpm 460v 60hz 18BT MOTOR				
5	4	F50000224	HANGING BRACKET				
4	6	F50000195	BLADE HOLDER				
3	6	F50000192	NEOPRENE BLADE				
2	1	SS0000814	36" FLAT DEFER ASSY				
1	1	SS0000831	DSPREY SUB ASSY				

LETTER	REVISION	REV BY	DATE
B	ITEMS WAS P19-394, ITEMS WAS P19-394, ITEM IS WAS P19-394	GRF	5-14-01
A	ITEMS WAS P19-394, ITEMS WAS P19-394, ITEM IS WAS P19-394	GRF	5-2-01
A	ITEMS WAS P19-42, ITEM IS WAS P19-187	GRF	5-2-01

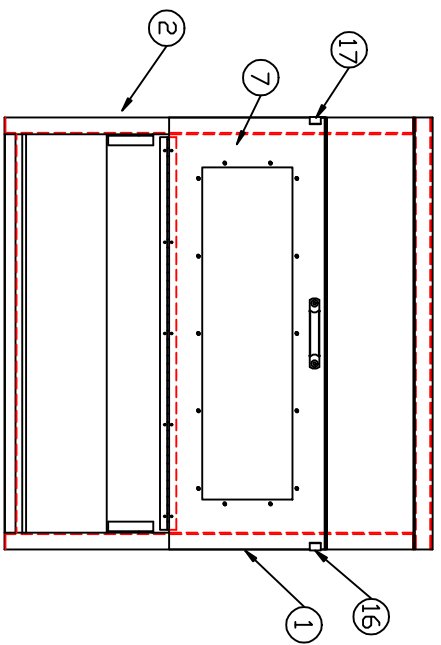
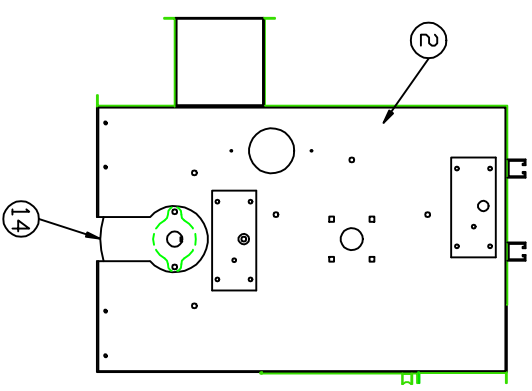
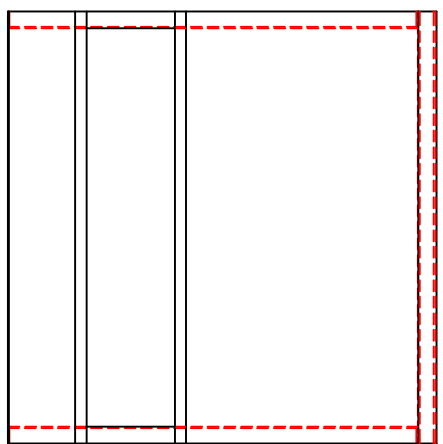
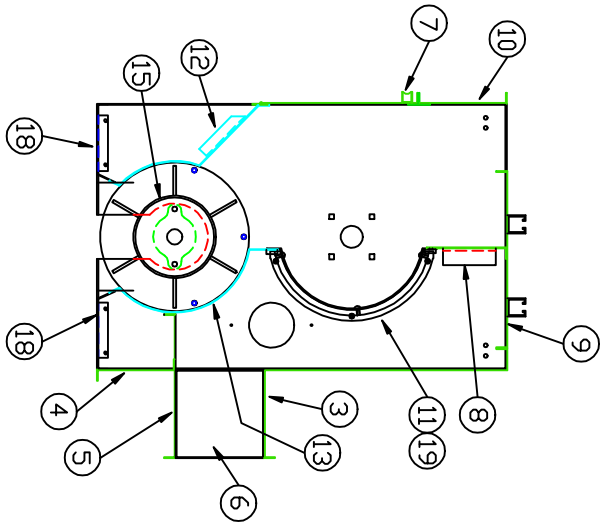
FILE	DATE	BY	CHK
TOLERANCES UNLESS OTHERWISE SPECIFIED			
FRACTION & DECIMAL	1/8=1		
DATE	2-19-01		

**FIBER CONTROLS**  
F.A. FULL SPEEDS  
F.A. FULL STOP  
F.A. FULL REVERSE  
F.A. FULL STOP  
F.A. FULL REVERSE  
F.A. FULL STOP

NAME: DSPREY D-106 x 36"  
TOP INLET ASSY

PART NO. A50000058

PART NO. S50000831  
REV.



ITEM	QTY	PART NO.	DESCRIPTION
19	2	PS0000377	INT. SCREEN CHEEK
18	2	SS0000342	FILL-IN ASS'Y
17	1	FS0000159	LH DDDR LATCH
16	1	FS0000160	RH DDDR LATCH
15	1	SS0000815	EXT. DDIFFER ASS'Y
14	2	SS0000451	DIFFER HEAD
13	1	FS0000830	EXT. DDIFFER SCREEN
12	1	SS0000343	EXT. DDIFFER COVER
11	1	SS0000835	INT. SCREEN ASS'Y COATED
10	1	SS0000807	TOP FRONT COVER
9	1	SS0000845	TOP COVER ASS'Y
8	1	SS0000796	INT. FILL-IN ASS'Y
7	1	SS0000792	CLEAN OUT DDDR ASS'Y
6	2	FS0000790	BAFFLE BOX
5	1	FS0000787	BOTTOM BACK COVER
4	1	FS0000786	BOTTOM COVER
3	1	FS0000785	TOP BACK COVER
2	1	SS0000832	LH SIDE PANEL
1	1	FS0000788	RH SIDE PANEL

LETTER: \_\_\_\_\_ REVISION: \_\_\_\_\_ REV. BY: \_\_\_\_\_ DATE: \_\_\_\_\_

FILE: \_\_\_\_\_ TOLERANCES UNLESS OTHERWISE SPECIFIED: FRACTION & DECIMAL: 1/8=1  
 DATE: 8-1-99  
 DRAWN BY: JDM  
 CHECKED BY: \_\_\_\_\_  
 DATE: \_\_\_\_\_

MTL: \_\_\_\_\_  
 PART NO. S50000831

**FIBER CONTROLS**  
 A FULL SERVICE CORPORATION  
 10000 W. 10TH AVE. DENVER, CO. 80202

NAME: DSPEY D-106 x 36"  
 PART NO. AS0000058  
 NAME: DSPEY  
 PART NO. S50000831