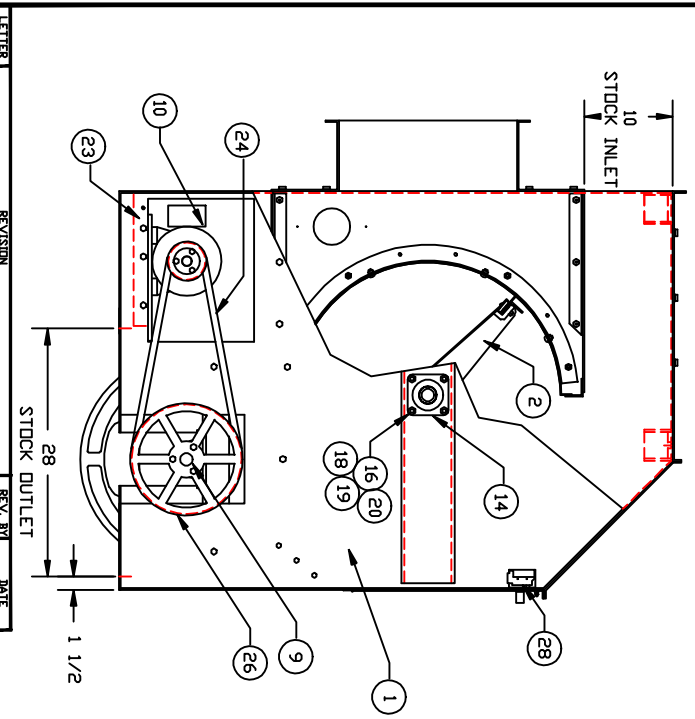
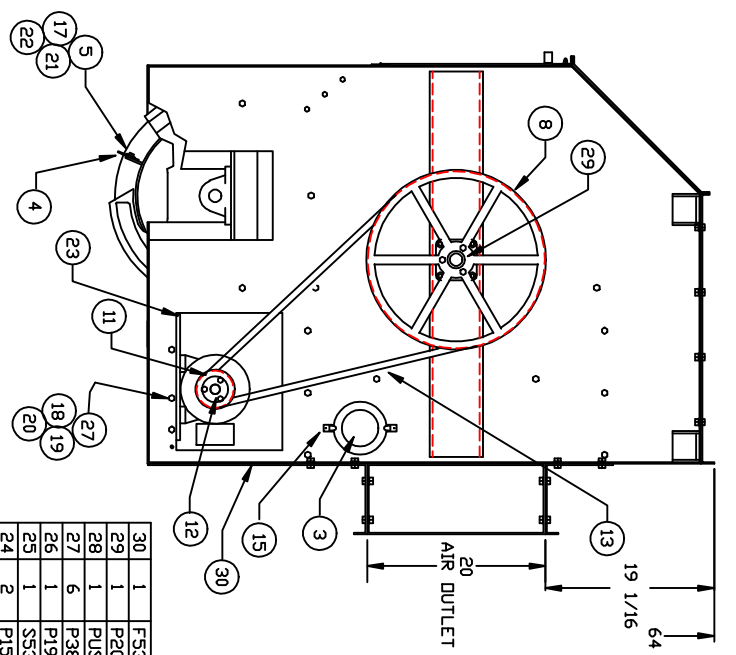
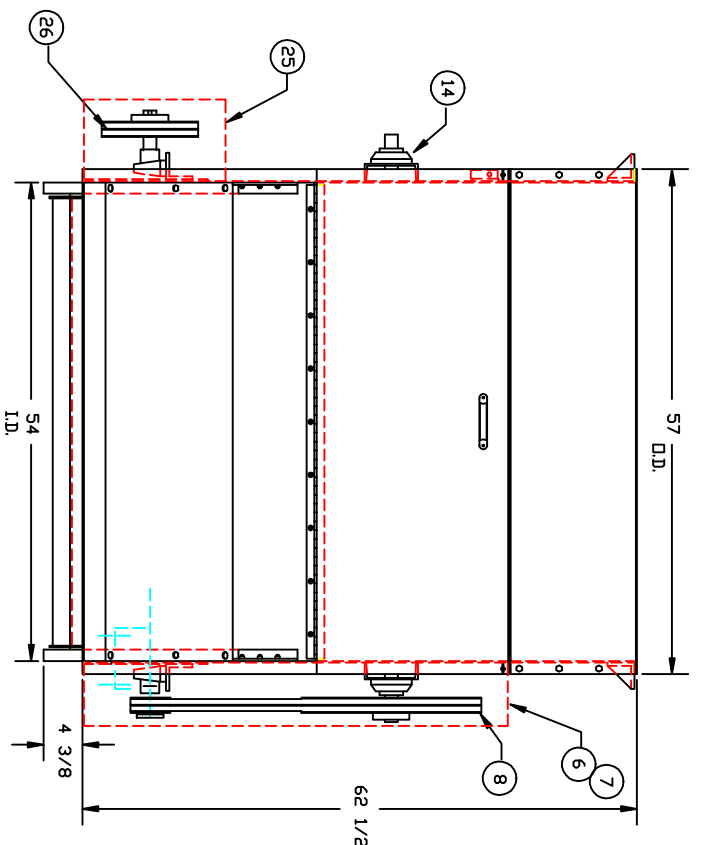
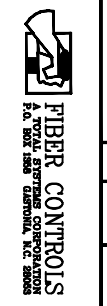


PART NO. AS3000003
REV.



ITEM	QTY	REPR.	PART NO.	DESCRIPTION
30	1		F53000295	FRONT MOTOR COVER
29	1		P2000040	Ø1 7/16 BORE
28	1		P15016076	BZE6-2RG MICRO SW.
27	6		P38400612	3/8-16X3/4 HH. BOLT
26	1		P19000016	2B124 SHEAVE
25	1		S53000190	MOTOR GUARD
24	2		P15000041	BELT B-67
23	1		S53000294	MOTOR BASE ASS'Y
22	36		P38620004	1/4 LOCK WASHER
21	36		P38600004	1/4 FLAT WASHER
20	16		P38680416	3/8-16 NUT
19	16		P38620006	3/8 LOCK WASHER
18	16		P38600006	3/8 FLAT WASHER
17	36		P38400410	1/4-20X 5/8 HH. BOLT
16	8		P38040566	3/8-16X3 1/2 CARR. BOLT
15	4		P35000042	SPRING FASTENER
14	2		P16000039	PCJN - 1 7/16 BEARING
13	2		P15000059	BELT B-97
12	2		P20000013	P1-1 1/8 BUSHING
11	2		P19000066	2TB4.2 SHEAVE
10	2		P22000137	MOTOR 2 HP, 1200RPM/460V
9	1		P20000054	2S17 1 7/16 BUSHING
8	1		P19000085	2TB20.0 SHEAVE
7	1		F53000135	DRIVE GUARD COVER
6	1		F53000134	DRIVE GUARD
5	6		F52000153	BLADE RETAINER
4	6		F52000190	NEPRENE BLADE
3	2		P50000175	6" PLEXIGLASS COVER
2	1		S53000197	FLAT DIFFER ASS'Y
1	1		S53000217	D-130 SUB. ASS'Y

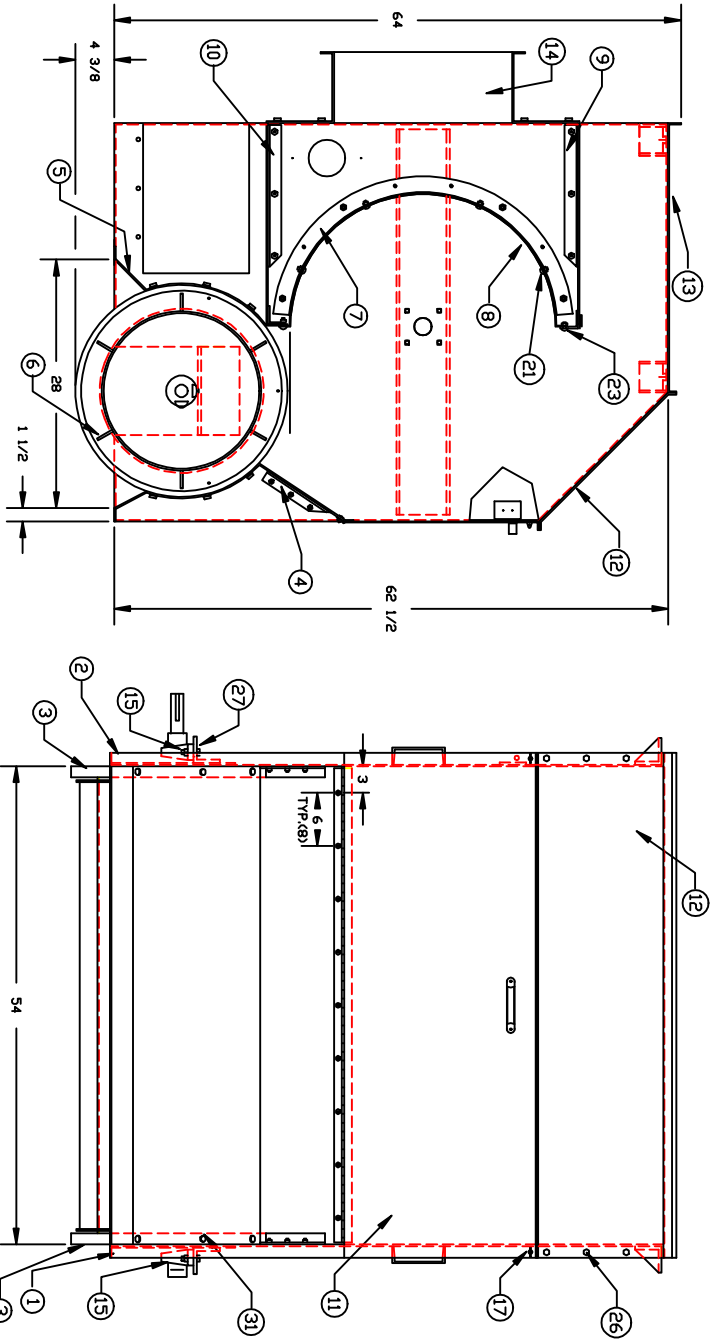
FILE	TOLERANCES UNLESS OTHERWISE SPECIFIED
DATE	FRACTION & DECIMAL
APP. BY	SCALE 1=1
CHK. BY	FRSH
DES. BY	REV. BY
DATE	DATE
6-3-92	



NAME	D-130 X 54'
MODEL	DISTRIBUTOR
PART NO.	AS3000003
DATE	

LETTER REVISION REV. BY DATE

PART NO.
SS3000217
REV.

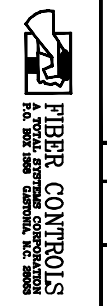


ITEM	QTY	PART NO.	DESCRIPTION
34	2	P38600004	1/4 B.S. FLAT WASHER
33	-	---	---
32	2	P38400408	1/4-20X1/2 HH. BOLT
31	18	P38400612	3/8-16X3/4 HH. BOLT
30	4	P38600008	1/2 FLAT WASHER
29	4	P38620008	1/2 LOCK WASHER
28	4	P38500813	1/2-13 HEX NUT
27	4	P38400832	1/2-13X2 HH. BOLT
26	66	P38400412	1/4-20X3/4 HH. CAP SCE.
25	78	P38500420	1/4-20 HEX NUT
24	78	96200004	1/4 B.S. LOCK WASHER
23	32	P38870412	1/4-20X3/4 BUT. HD. SCR.
22	36	P38580420	1/4-20 LOCK NUT
21	15	P38870408	1/4-20X1/2 BUT. HD. SCR.
20	8	P38500616	3/8-16 LOCK NUT
19	24	P38620006	3/8 LOCK WASHER
18	8	P38870616	3/8-16X1 BUT. HD. SCR.
17	2	P38470420	1/4-20 WING NUT
16	-	---	---
15	2	P16000054	BEARING RAK 1 7/16
14	2	F53000118	BAFFEL END PIECE
13	1	F53000210	TOP COVER
12	1	SS3000215	FRONT TOP COVER ASS'Y
11	1	SS3000211	DOOR ASSEMBLY
10	1	SS3000220	OUTLET COVER ASS'Y
9	1	SS3000208	INLET COVER ASS'Y
8	1	F53000207	DIFFER SCREEN
7	2	F53000104	INT. SCREEN CHEEK
6	1	SS3000195	EXTERNAL DIFFER ASS'Y
5	1	F53000203	EXTERNAL DIFFER COVER
4	1	SS3000204	EXTERNAL DIFFER SLIDE
3	2	P53000148	EXTERNAL DIFFER HEAD
2	1	SS3000176	L.H. SIDE PANEL ASS'Y
1	1	SS3000175	R.H. SIDE PANEL ASS'Y

LETTER	REVISION	REV. BY	DATE

FILE	TOLERANCES UNLESS OTHERWISE SPECIFIED
DATE	FRACTIONAL & DECIMAL
APP.	MINIMUM & SCALE 1:1=1.0
CHK.	DRAWN BY RCL
CO.	DATE 6-1-92

MTL.	FRSH
------	------



NAME	D-130
SUB. ASS'Y	54'
MO. NO.	D-130
REV.	SS3000217