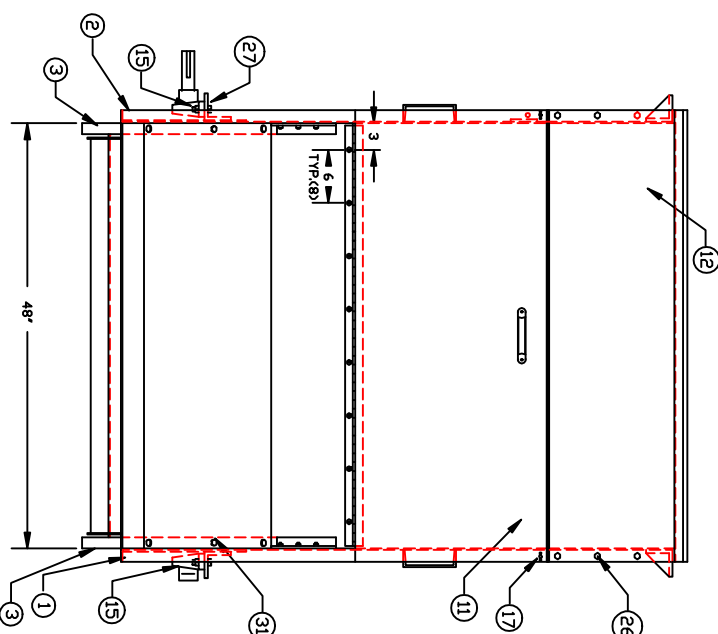
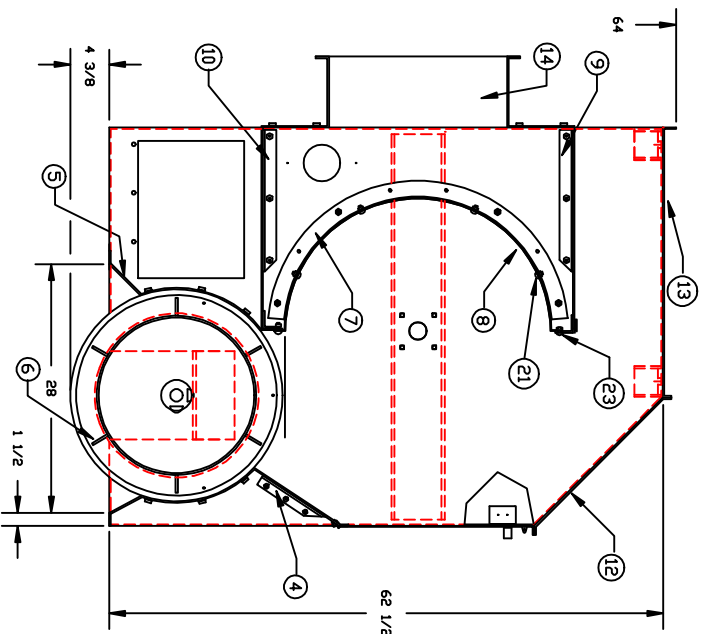


PART NO.
S53000151
REV.



ITEM	REQ'D	PART NO.	DESCRIPTION
1	1	S53000175	R.H. SIDE PANEL ASS'Y
2	1	S53000176	L.H. SIDE PANEL ASS'Y
3	1	F53000148	EXTERNAL DIFFUSER HEAD
4	1	S53000153	EXTERNAL DIFFUSER SLIDE
5	1	F53000152	EXTERNAL DIFFUSER COVER
6	1	S53000154	EXTERNAL DIFFUSER ASS'Y
7	2	F53000104	INT. SCREEN CHEEK
8	1	F53000120	DIFFUSER SCREEN
9	1	S53000123	INLET COVER ASS'Y
10	1	S53000259	OUTLET COVER ASS'Y
11	1	S53000186	DOOR ASSEMBLY
12	1	S53000158	FRONT TOP COVER ASS'Y
13	1	F53000117	TOP COVER
14	2	F53000118	BAFFLE END PIECE
15	2	P16000054	BEARING RAK 1 7/16
16	-	---	---
17	2	P38470420	1/4-20 WING NUT
18	8	P38870616	3/8-16X1 BUT. HD. SCR.
19	24	P38620006	3/8 LOCK WASHER
20	8	P38500616	3/8-16 LOCK NUT
21	15	P38870408	1/4-20X1/2 BUT. HD. SCR.
22	36	P38580420	1/4-20 LOCK NUT
23	32	P38870412	1/4-20X3/4 BUT. HD. SCR.
24	78	P38620004	1/4 B.S. LOCK WASHER
25	78	P38500420	1/4-20 HEX NUT
26	66	P38400412	1/4-20X3/4 HH. CAP SCE.
27	4	P38400832	1/2-13X2 HH. BOLT
28	4	P38500813	1/2-13 HEX NUT
29	4	P38620008	1/2 LOCK WASHER
30	4	P38600008	1/2 FLAT WASHER
31	18	P38400612	3/8-16X3/4 HH. BOLT
32	2	P38400408	1/4-20X1/2 HH. BOLT
33	-	---	---
34	2	P38600004	1/4 B.S. FLAT WASHER

FILE	DATE	DESIGNER	SCALE	DATE
AWL			1:10	
AWL				
DCI				

TOLERANCES UNLESS OTHERWISE SPECIFIED
FRACTIONS & DECIMALS
DIMENSIONS IN INCHES
UNLESS OTHERWISE SPECIFIED
FRACTIONS & DECIMALS
DIMENSIONS IN MILLIMETERS
DATE 6-1-92

MTL
FRESH

FIBER CONTROLS
A FULL SERVICE CORPORATION
P.O. BOX 288
DUNSMITH, N.Y. 14048

NAME
D-130
SUB. ASS'Y 48'

MOCH
D-130

PART NO.
S53000151

LETTER REVISION REV BY DATE