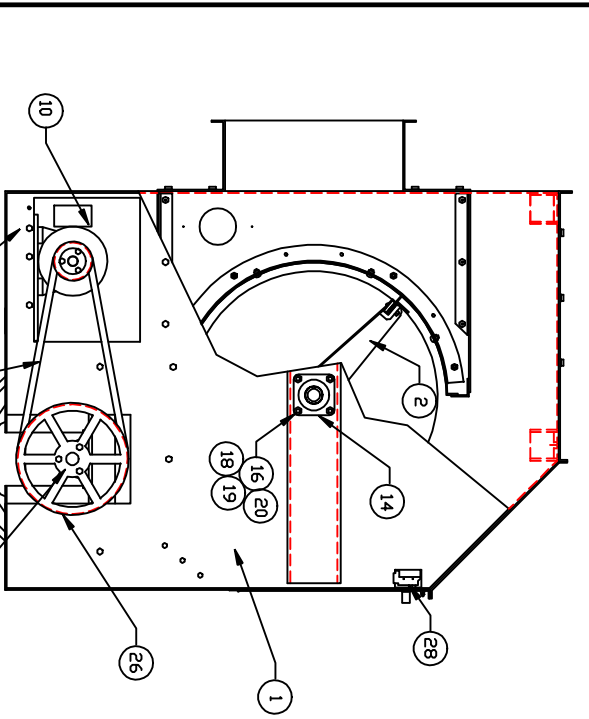
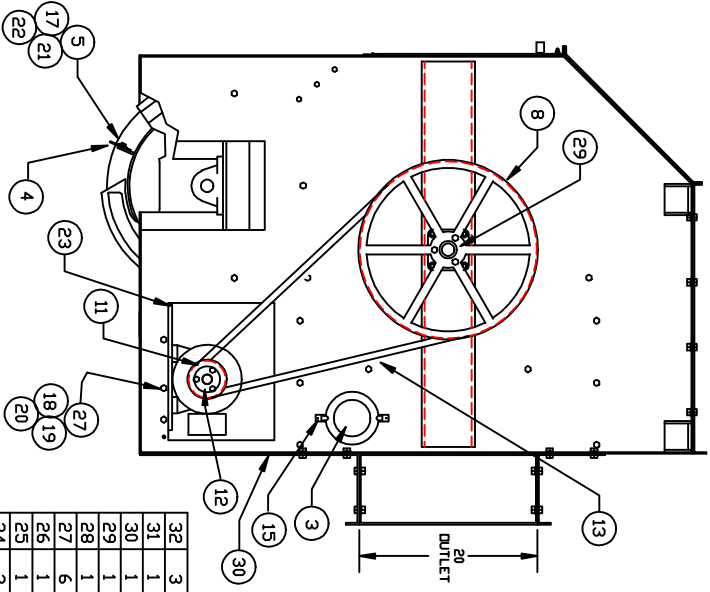
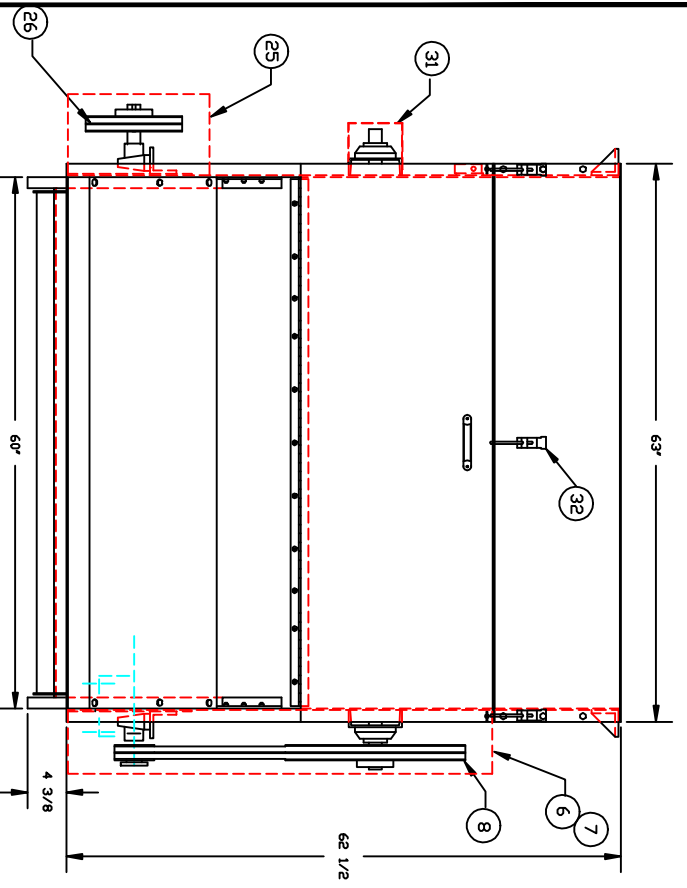


PART NO. AS3000008
REV.



| ITEM | REQ'D. | PART NO. | DESCRIPTION |
|------|--------|------------|-------------------------|
| 32 | 3 | P35000116 | LATCH A1-11-702-20 |
| 31 | 1 | S53000338 | BEARING/SHAFT GUARD |
| 30 | 1 | F53000301 | FRONT MOTOR COVER |
| 29 | 1 | P20000040 | Ø1 1 7/16 BORE |
| 28 | 1 | P15016076 | BZE6-2RG MICRO SW. |
| 27 | 6 | P38400612 | 3/8-16X3/4 HH. BOLT |
| 26 | 1 | P19000016 | 2B124 SHEAVE |
| 25 | 1 | S53000190 | MOTOR GUARD |
| 24 | 2 | P15000041 | BELT B-67 |
| 23 | 1 | S53000298 | MOTOR BASE ASS'Y |
| 22 | 36 | P38620004 | 1/4 LOCK WASHER |
| 21 | 36 | P38600004 | 1/4 FLAT WASHER |
| 20 | 16 | P38680016 | 3/8-16 NUT |
| 19 | 16 | P38620006 | 3/8 LOCK WASHER |
| 18 | 16 | P38600006 | 3/8 FLAT WASHER |
| 17 | 36 | P384000410 | 1/4-20X 5/8 HH. BOLT |
| 16 | 8 | P38040556 | 3/8-16X3 1/2 CARR. BOLT |
| 15 | 4 | P35000042 | SPRING FASTENER |
| 14 | 2 | P16000039 | PCJN - 1 7/16 BEARING |
| 13 | 2 | P15000059 | BELT B-97 |
| 12 | 2 | P20000013 | P1-1 1/8 BUSHING |
| 11 | 2 | P19000066 | 2TB4.2 SHEAVE |
| 10 | 2 | P22000137 | MOTOR 2 HP.1800RPM/460V |
| 9 | 1 | P20000054 | 2S17 1 7/16 BUSHING |
| 8 | 1 | P19000085 | 2TB20.0 SHEAVE |
| 7 | 1 | F53000135 | DRIVE GUARD COVER |
| 6 | 1 | F53000134 | DRIVE GUARD |
| 5 | 6 | F52000365 | BLADE RETAINER |
| 4 | 6 | F53000246 | NEPRENE BLADE |
| 3 | 2 | P50000175 | 6" PLEXIGLASS COVER |
| 2 | 1 | S53000306 | FLAT DIFFER ASS'Y |
| 1 | 1 | S53000244 | D-130 SUB. ASS'Y |

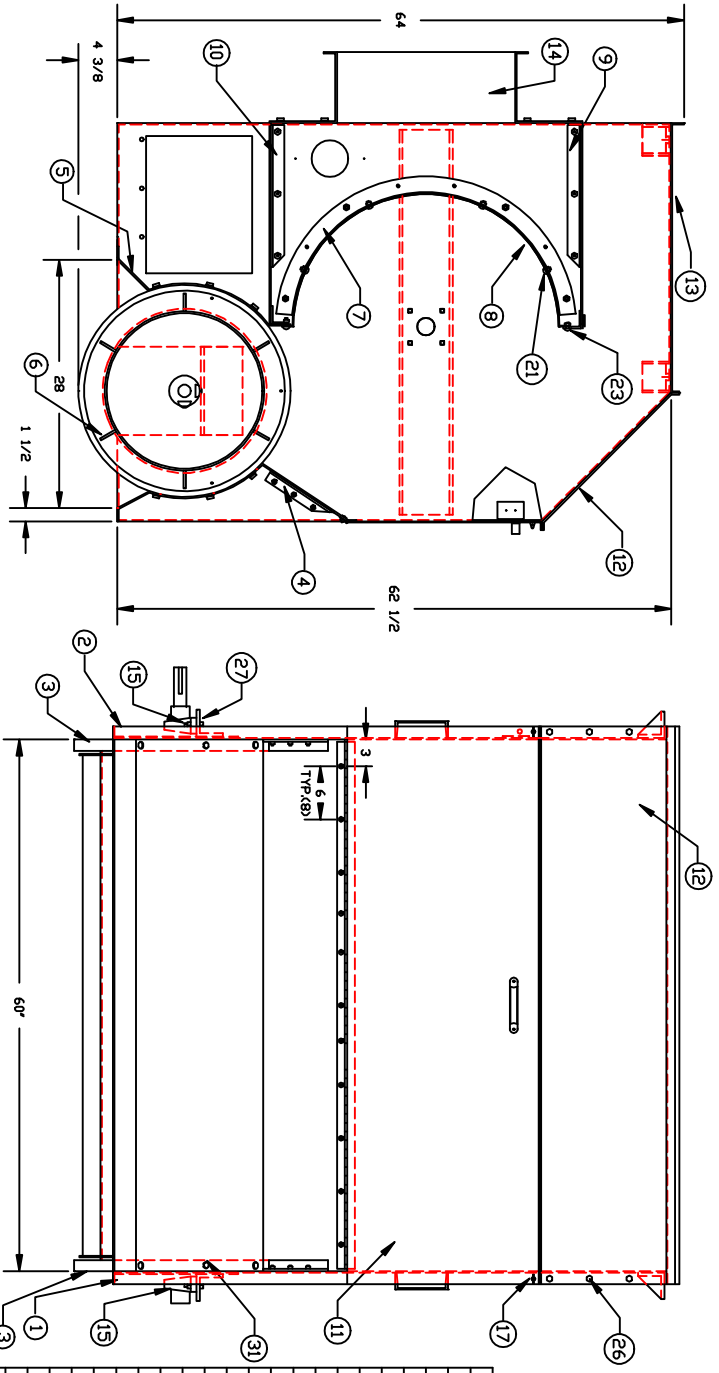
| LETTER | REVISION | REV BY | DATE |
|--------|----------|--------|------|
| | | | |

| | | |
|------|---------------------------------------|----------|
| FILE | TOLERANCES UNLESS OTHERWISE SPECIFIED | M.T.L. |
| DATE | FRACTIONAL & DECIMALS | FRACTION |
| APP | MINIMUM & MAXIMUM | |
| DES | SCALE 1=1 | |
| CHK | DRAWN BY RCL | |
| COA | DATE 2-23-94 | |

FIBER CONTROLS
A FIBER OPTICS CORPORATION
P.O. BOX 399
GROTON, CT 06340

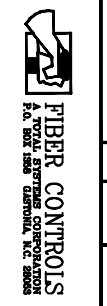
NAME: D-130 X 60"
DIST. W/ SHRUDED DOFFER

PART NO. AS3000008



| ITEM | QTY | PART NO. | DESCRIPTION |
|------|-----|-----------|--------------------------|
| 34 | 2 | P38600004 | 1/4 B.S. FLAT WASHER |
| 33 | - | --- | --- |
| 32 | 2 | P38400408 | 1/4-20X1/2 HH. BOLT |
| 31 | 18 | P38400612 | 3/8-16X3/4 HH. BOLT |
| 30 | 4 | P38600008 | 1/2 FLAT WASHER |
| 29 | 4 | P38620008 | 1/2 LOCK WASHER |
| 28 | 4 | P38500813 | 1/2-13 HEX NUT |
| 27 | 4 | P38400832 | 1/2-13X2 HH. BOLT |
| 26 | 66 | P38400412 | 1/4-20X3/4 HH. CAP SCE. |
| 25 | 78 | P38500420 | 1/4-20 HEX NUT |
| 24 | 32 | P38870412 | 1/4 B.S. LOCK WASHER |
| 23 | 36 | P38580420 | 1/4-20 LOCK NUT |
| 22 | 15 | P38870408 | 1/4-20X1/2 BUT. HD. SCR. |
| 21 | 8 | P38500616 | 3/8-16 LOCK NUT |
| 20 | 24 | P38620006 | 3/8 LOCK WASHER |
| 19 | 8 | P38870616 | 3/8-16X1 BUT. HD. SCR. |
| 18 | 2 | P38470420 | 1/4-20 WING NUT |
| 17 | - | --- | --- |
| 16 | 2 | P16000054 | BEARING RAK 1 7/16 |
| 15 | 2 | F53000118 | BAFFEL END PIECE |
| 14 | 1 | F53000235 | TOP COVER |
| 13 | 1 | F53000240 | FRONT TOP COVER ASS'Y |
| 12 | 1 | F53000238 | DDDR ASSEMBLY |
| 11 | 1 | F53000236 | INLET COVER ASS'Y |
| 10 | 1 | F53000104 | INT. SCREEN CHECK |
| 9 | 1 | F53000241 | EXTERNAL DIFFER ASS'Y |
| 8 | 1 | F53000230 | EXTERNAL DIFFER COVER |
| 7 | 1 | F53000226 | EXTERNAL DIFFER SLIDE |
| 6 | 1 | P53000176 | EXTERNAL DIFFER HEAD |
| 5 | 1 | S53000175 | L.H. SIDE PANEL ASS'Y |
| 4 | 1 | S53000175 | R.H. SIDE PANEL ASS'Y |

| | |
|---------|---------------------------------------|
| FILE | TOLERANCES UNLESS OTHERWISE SPECIFIED |
| DATE | FRACTIONAL & DECIMAL |
| REV. BY | SCALE 1:10 |
| DATE | DRAWN BY RCL |
| CHK | DATE 6-1-92 |
| APP | |
| DES | |



| | |
|----------|-----------|
| MTL | WMA |
| FRSH | |
| MOH | D-130 |
| PART NO. | S53000244 |
| DATE | |

| | | | |
|--------|----------|---------|------|
| LETTER | REVISION | REV. BY | DATE |
| | | | |