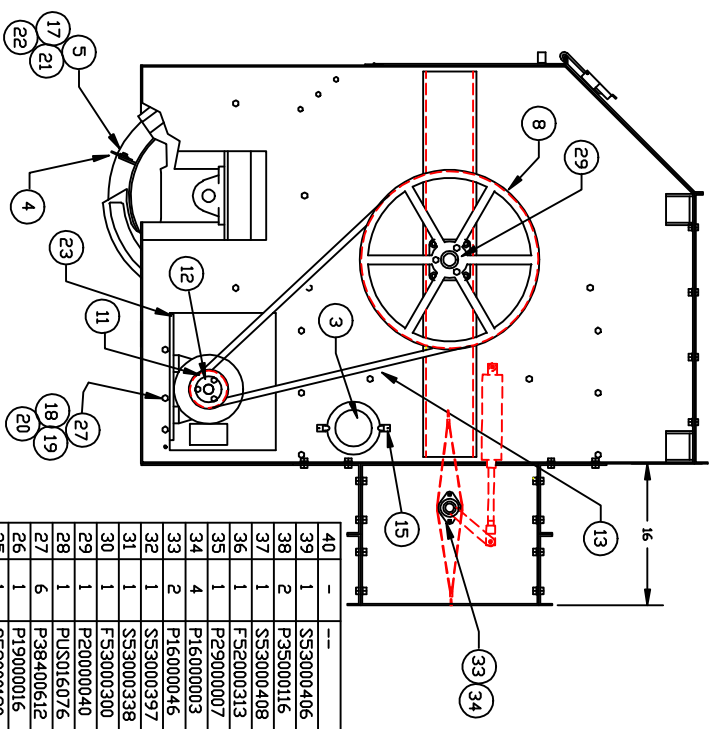
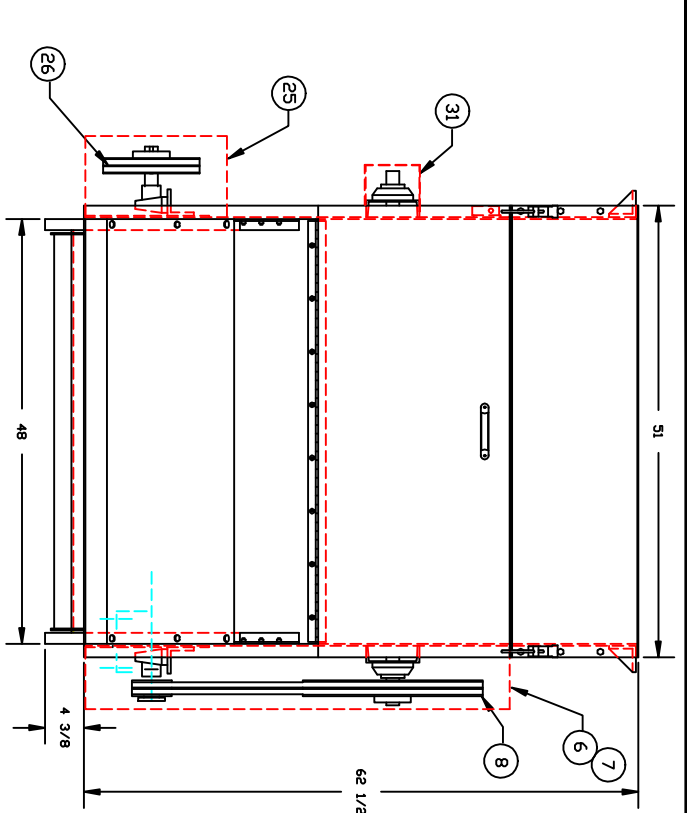
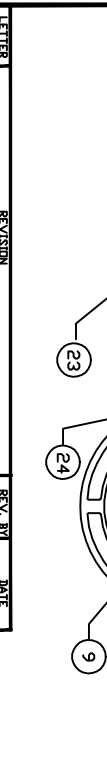


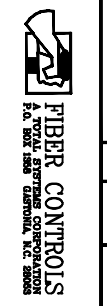
PART NO. AS3000011  
REV.



ITEM	REPR.	PART NO.	DESCRIPTION
39	1	SS3000406	ACCUTATOR ARM
38	2	P35000116	LATCH A1-11-702-20
37	1	SS3000408	JUNCTION BOX
36	1	FS5000313	RDD CLEVIS
35	1	P29000007	CYLINDER 2X6
34	4	P16000003	S2 MST STAMPING
33	2	P16000046	RA100NPPB BEARING
32	1	SS3000397	AIR VALVE 48"
31	1	SS3000338	BEARING SHAFT GUARD
30	1	FS3000300	FRONT MOTOR COVER
29	1	P20000040	Ø1 1 7/16 BORE
28	1	P15016076	BZE6-2RG MICRO SW.
27	6	P38400612	3/8-16X3/4 HH. BOLT
26	1	P19000016	2B124 SHEAVE
25	1	SS3000190	MOTOR GUARD
24	2	P15000041	BELT B-67
23	1	SS3000299	MOTOR BASE ASS'Y
22	36	P38620004	1/4 LOCK WASHER
21	36	P38600004	1/4 FLAT WASHER
20	16	P38680416	3/8 FLAT NUT
19	16	P38620006	3/8 LOCK WASHER
18	16	P38600006	3/8 FLAT WASHER
17	36	P38400410	1/4-20X 5/8 HH. BOLT
16	8	P38040556	3/8-16X3 1/2 CARR. BOLT
15	4	P35000042	SPRING FASTNER
14	2	P16000039	PCJN - 1 7/16 BEARING
13	2	P15000059	BELT B-97
12	2	P20000013	P1-1 1/8 BUSHING
11	2	P19000066	2TB4.2 SHEAVE
10	2	P22000137	MOTOR 2 HP.1200RPM/460V
9	1	P20000054	2S17 1 7/16 BUSHING
8	1	P19000085	2TB20.0 SHEAVE
7	1	FS3000135	DRIVE GUARD COVER
6	1	FS3000134	DRIVE GUARD
5	6	FS2000152	BLADE RETAINER
4	6	FS3000161	NEPRENE BLADE
3	2	PS0000175	6" PLEXIGLASS COVER
2	1	SS3000303	FLAT DUFFER ASS'Y
1	1	SS3000403	D-130 SUB ASSY W/A&E



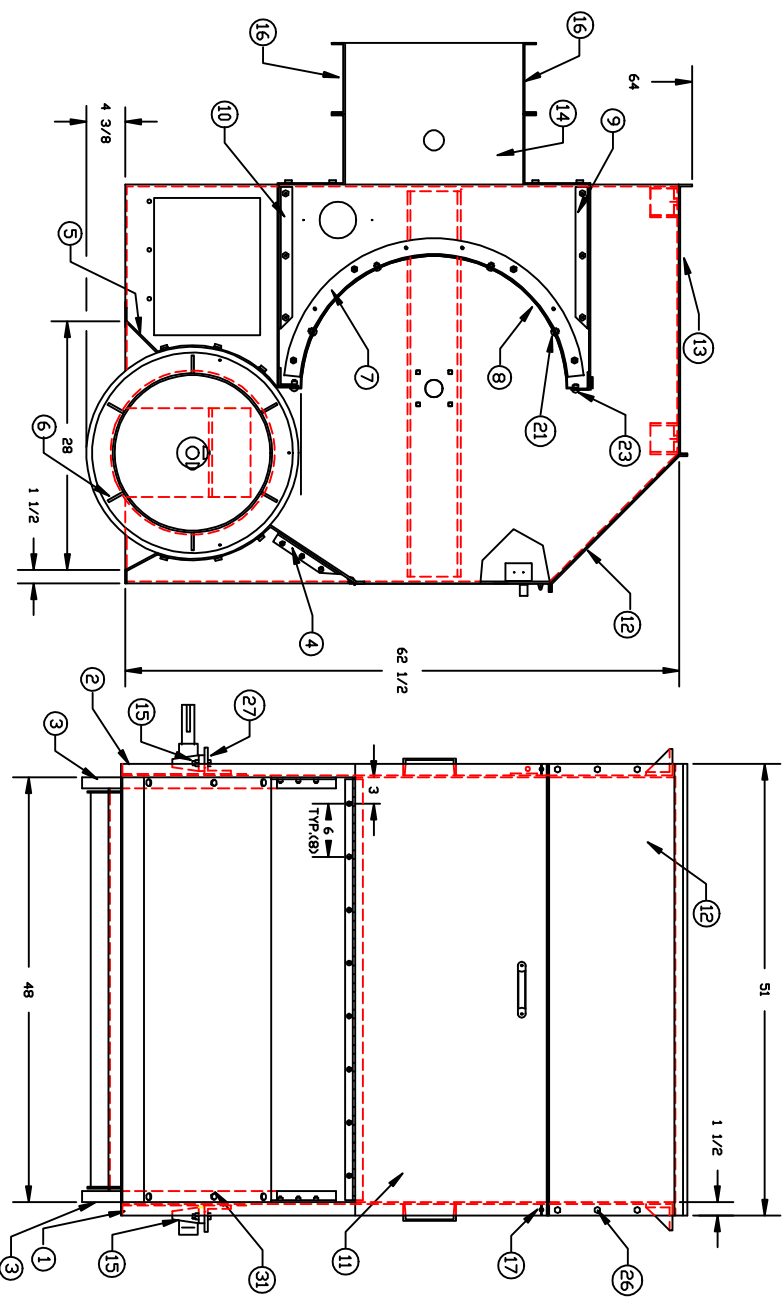
FILE	TOLERANCES UNLESS OTHERWISE SPECIFIED
DATE	FRACTIONAL & DECIMALS
REV. BY	SCALE 1=1
DATE	DRAWN BY RCL
DATE	8-22-95
DATE	



FIBER CONTROLS  
D-130 X 48"  
W/SHRUDED DUFFER AND A&E  
PART NO. AS3000011

LETTER REVISION DATE

PART NO.  
SS3000403  
REV.



ITEM	QTY	PART NO.	DESCRIPTION
34	2	P38600004	1/4 B.S. FLAT WASHER
33	-	-	-
32	2	P38400408	1/4-20X1/2 HH. BOLT
31	18	P38400612	3/8-16X3/4 HH. BOLT
30	4	P38600008	1/2 FLAT WASHER
29	4	P38620008	1/2 LOCK WASHER
28	4	P38500813	1/2-13 HEX NUT
27	4	P38400832	1/2-13X2 HH. BOLT
26	66	P38400412	1/4-20X3/4 HH. CAP SCE.
25	78	P38500420	1/4-20 HEX NUT
24	32	P38870412	1/4-20X3/4 BUT. HD. SCR.
23	36	P38580420	1/4-20 LOCK NUT
22	15	P38870408	1/4-20X1/2 BUT. HD. SCR.
21	8	P38500616	3/8-16 LOCK NUT
20	8	P38620006	3/8 LOCK WASHER
19	8	P38870616	3/8-16X1 BUT. HD. SCR.
18	2	F33000404	1/4-20 WING NUT
17	2	F33000152	EXTERNAL DOPFER COVER
16	2	P16000054	BEARING RAK 1 7/16
15	2	SS3000405	BAFFEL END PIECE
14	1	F53000117	TOP COVER
13	1	SS3000158	FRONT TOP COVER ASSY
12	1	SS3000186	DOOR ASSEMBLY
11	1	SS3000259	OUTLET COVER ASSY
10	1	SS3000123	INLET COVER ASSY
9	1	F53000120	DOPFER SCREEN
8	2	SS3000104	INT. SCREEN CHEEK
7	1	SS3000154	EXTERNAL DOPFER ASSY
6	1	F53000152	EXTERNAL DOPFER COVER
5	1	SS3000153	EXTERNAL DOPFER SLIDE
4	1	F53000148	EXTERNAL DOPFER HEAD
3	1	SS3000176	L.H. SIDE PANEL ASSY
2	1	SS3000175	R.H. SIDE PANEL ASSY
1	1	D-130	SUB. ASSY 48"

LETTER: \_\_\_\_\_ REVISION: \_\_\_\_\_ REV. BY: \_\_\_\_\_ DATE: \_\_\_\_\_

FILE: \_\_\_\_\_ DATE: \_\_\_\_\_  
 APPR: \_\_\_\_\_  
 DCA

TOLERANCES UNLESS OTHERWISE SPECIFIED  
 FRACTIONAL & DECIMAL: 1:10  
 DIMS BY RCL  
 WAVE 6-1-92

MTL. \_\_\_\_\_  
 FINISH \_\_\_\_\_

**FIBER CONTROLS**  
 A FAYAT SHERMAN CORPORATION  
 P.O. BOX 399 CLEVELAND, OH 44109

MOCK: D-130 PART NO. SS3000403  
 WVA