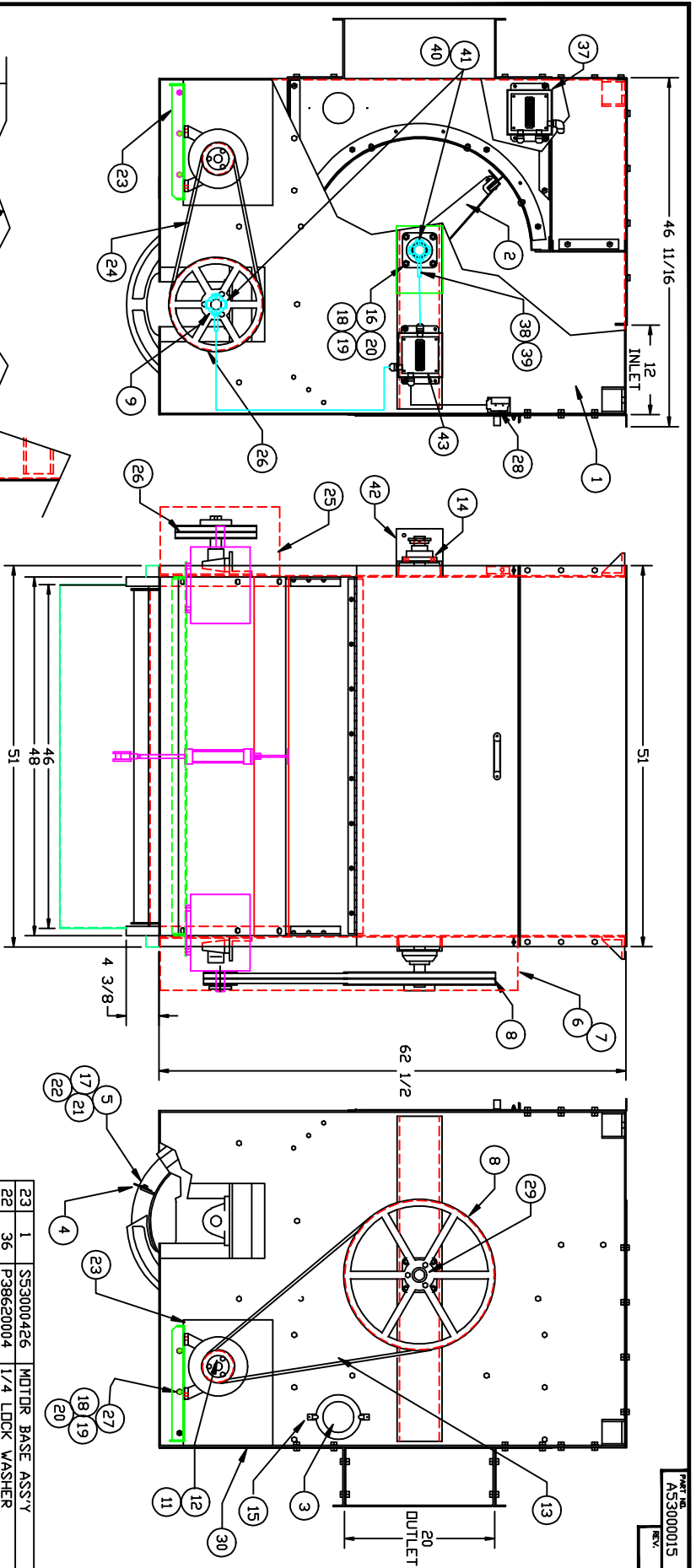
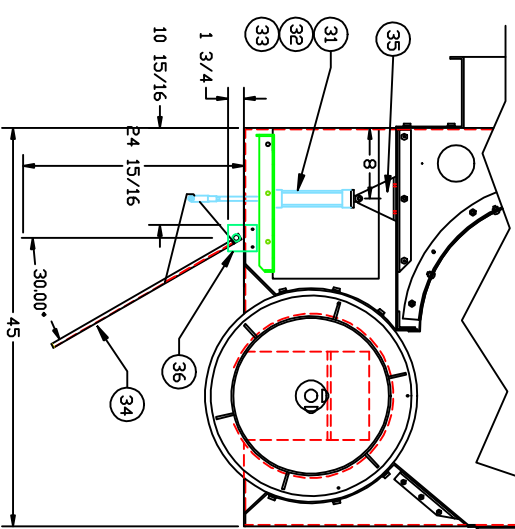


PART NO. AS3000015  
REV.



AL8482H-250-600-63-N11-0  
MILLER FLUID POWER



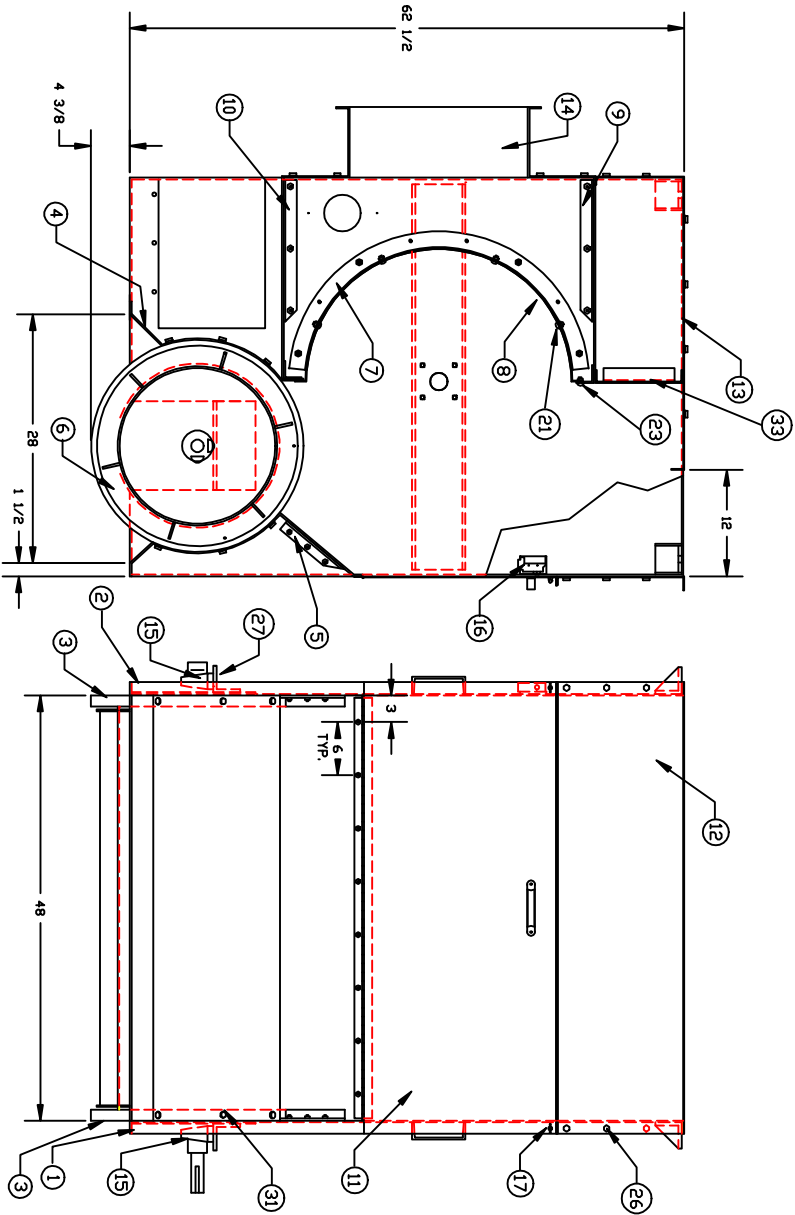
ITEM	REQ'D.	PART NO.	DESCRIPTION
43	1	SEL260203	CONTROL BOX
42	1	SS3000512	BEARING COVER
41	2	F53000511	SENSOR BRACKET
40	2	F53000510	COLLER TARGET
39	2	PUS016392	WK4T6P7X2 (TURCK CAB)
38	2	PUS016391	B14-M12-AP6X-(114)(TURCK)
37	1	SEL260202	MOTOR BOX
36	2	F53000432	PIVET BLDDKS
35	2	F53000431	MOUNTING ANGLE
34	1	SS3000430	DIVERIER DDDR ASSY
33	1	P29000012	MOUNTING BRACKET
32	1	P29000011	CLEVIS
31	1	P29000010	AIR CYLINDER
30	1	F53000300	FRONT MOTOR COVER
29	1	P20000040	Ø1 7/16 BORE
28	1	PUS016076	BZE6-2RQ MICRO S.W.
27	6	P38400612	3/8-16X3/4 H.H. BOLT
26	1	P19000016	2B124 SHEAVE
25	1	SS3000190	MOTOR GUARD
24	2	P15000041	BELT B-67

ITEM	REQ'D.	PART NO.	DESCRIPTION
23	1	SS3000426	MOTOR BASE ASSY
22	36	P38620004	1/4 LOCK WASHER
21	16	P38600004	1/4 FLAT WASHER
20	16	P38680416	3/8-16 NUT
19	16	P38620006	3/8 LOCK WASHER
18	16	P38600006	3/8 FLAT WASHER
17	36	P38400410	1/4-20X 5/8 H.H. BOLT
16	8	P38040656	3/8-16X3 1/2 CARB BOLT
15	4	P35000042	SPRING FASTNER
14	2	P16000039	PCJN - 1 7/16 BEARING
13	2	P15000059	BELT B-97
12	2	P20000013	P-1-1 1/8 BUSHING
11	2	P29000066	ØT3.4.2 SHEAVE
10	2	P20000182	MOTOR ZHP, 1200RPM/460V
9	1	P20000054	2517 1 7/16 BUSHING
8	1	P19000085	Ø1B20.0 SHEAVE
7	1	F53000135	DRIVE GUARD COVER
6	1	F53000134	DRIVE GUARD
5	6	F52000152	BLADE RETAINER
4	6	F53000151	NEOPRENE BLADE
3	2	P50000175	6° PLEXIGLASS COVER
2	1	SS3000180	FLAT DDIFFER ASSY
1	1	SS3000268	D-130 SUB. ASSY

LETTER: \_\_\_\_\_ REVISION: \_\_\_\_\_ REV. BY: \_\_\_\_\_ DATE: \_\_\_\_\_

FILE	TOLERANCES UNLESS OTHERWISE SPECIFIED	FRONT	<p>FIBER CONTROLS F.A. 2000 DISTRIBUTION, INC. 20000</p>
DATE	FRACTIONAL & DECIMAL SCALE: 1=1		
APP. BY	DRAWN BY: JIM		
CHK. BY	DATE: 4-28-98		

NAME	D-130 X 48'	PART NO.	AS3000015
MOCH	TOP INLET DIST		
MA			

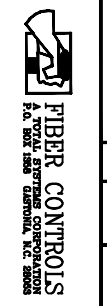


ITEM	QTY	PART NO.	DESCRIPTION
34	2	P38600004	1/4 B.S. FLAT WASHER
33	1	SS3000622	INLET COVER INSIDE
32	2	P38400408	1/4-20X1/2 HH. BOLT
31	18	P38400612	3/8-16X3/4 HH. BOLT
30	4	P38600008	1/2 FLAT WASHER
29	4	P38620008	1/2 LOCK WASHER
28	4	P38500813	1/2-13 HEX NUT
27	4	P38400832	1/2-13X2 HH. BOLT
26	66	P38400412	1/4-20X3/4 HH. CAP SCE.
25	78	P38500420	1/4-20 HEX NUT
24	78	P38620004	1/4 B.S. LOCK WASHER
23	32	P38870412	1/4-20X3/4 BUT. HD. SCR.
22	36	P38580420	1/4-20 LOCK NUT
21	15	P38870408	1/4-20X1/2 BUT. HD. SCR.
20	8	P38500616	3/8-16 LOCK NUT
19	24	P38620006	3/8 LOCK WASHER
18	8	P38870616	3/8-16X1 BUT. HD. SCR.
17	2	P38470420	1/4-20 WING NUT
16	1	PUS016076	BZE6-2R0 MICRO SW.
15	2	P16000054	BEARING RAK 1 7/16
14	2	F53000118	BAFFEL END PIECE
13	1	F53000271	TOP FRONT COVER
12	1	SS3000286	TOP BACK COVER ASSY
11	1	SS3000186	DDDR ASSEMBLY
10	1	SS3000259	OUTLET COVER ASSY
9	1	SS3000123	INLET COVER ASSY
8	1	F53000120	DIFFER SCREEN
7	2	F53000104	INT. SCREEN CHECK
6	1	SS3000154	EXTERNAL DIFFER ASSY
5	1	F53000152	EXTERNAL DIFFER COVER
4	1	SS3000153	EXTERNAL DIFFER SLIDE
3	2	P53000148	EXTERNAL DIFFER HEAD
2	1	SS3000267	L.H. SIDE PANEL ASSY
1	1	SS3000266	R.H. SIDE PANEL ASSY

LETTER	REVISION	REV. BY	DATE

FILE	TOLERANCES UNLESS OTHERWISE SPECIFIED
DATE	FRACTIONAL & DECIMAL
APP.	1:1=1:10
CHK.	DRAWN BY RCL
DES.	DATE 5-29-92

MTL	
FINISH	



NAME	D-130
SUB. ASS'Y	48"
MOQ	D-130
REV. NO.	SS3000268

PART NO. SS3000268  
REV.