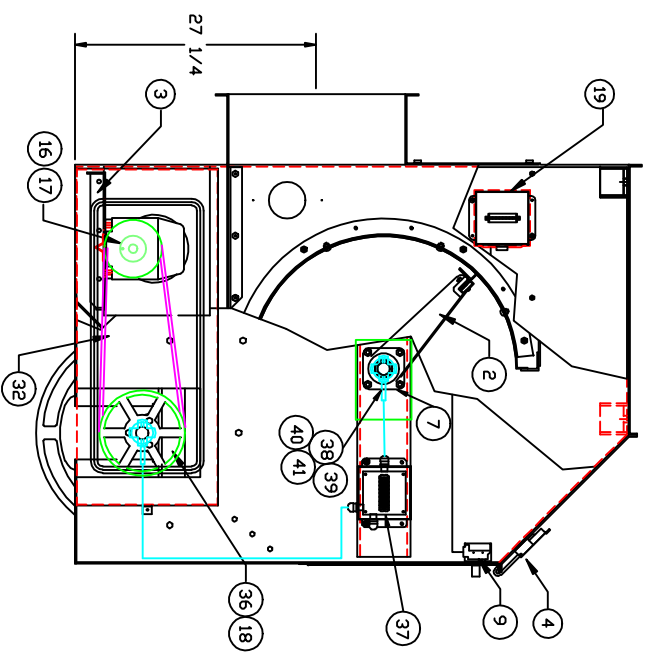
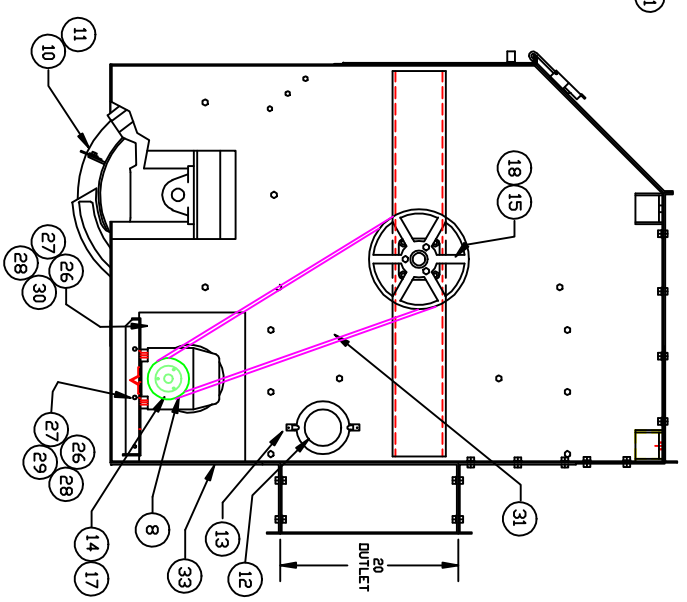
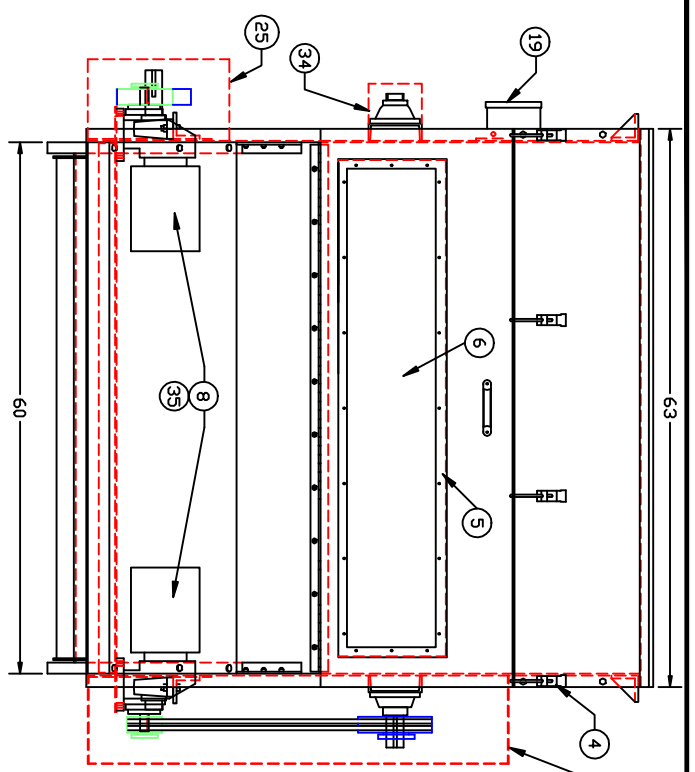


PART NO. A53000023  
REV.

NOTE:  
THIS MACHINE HAS  
SPECIAL INT. SCREEN  
AND MOTORS  
FLAT DDF = 190RPM  
ROUND DDF = 305RPM  
FLAT = DRV4.4 - DRVN11.0  
RD = DRV6.4 - DRVN9.4



ITEM	RECD.	PART NO.	DESCRIPTION
41	2	FS3000511	SENSOR BRACKET
40	2	FS3000537	COLLER TARGET
39	2	PUS016392	WK4T6P7Y2 (TURCK CAB)
38	2	PUS016391	B14-M12-AP6X-1141(TURCK)
37	1	SEL260203	CONTROL BOX
36	1	P19000080	2TB 9.4 SHEAVE
35	2	P22000311	RX67 3.771 SEW GB
34	1	SS30003512	BEARING COVER
33	1	FS3000301	FRONT MOTOR COVER
32	2	P15000037	BELT B-62
31	2	P15000052	BELT B-82
30	16	P38400624	3/8-16X1 1/2 HH. BOLT
29	6	P38400612	3/8-16X3/4 HH. BOLT
28	16	P38680416	3/8-16 NUT
27	16	P38620006	3/8 LOCK WASHER
26	16	P38600006	3/8 FLAT WASHER
25	1	SS3000504	MOTOR GUARD
24	36	P38400410	1/4-20X 5/8 HH. BOLT
23	36	P38620004	1/4 LOCK WASHER
22	36	P38600004	1/4 FLAT WASHER
21	1	SS3000471	DRIVE GUARD COVER
20	1	SS3000488	DRIVE GUARD
19	1	SEL260202	MOTOR BOX
18	2	P20000045	Q 1 15/16 BUSHING
17	2	P20000105	P1X1" BUSHING
16	1	P19000072	2TB6.2 SHEAVE
15	1	P19000208	2TB11.0 SHEAVE
14	1	P19000067	2TB4.4 SHEAVE
13	4	P35000042	SPRING FASTNER
12	2	P50000175	6" PLEXIGLASS COVER
11	6	FS3000444	BLADE RETAINER
10	6	FS3000443	NEOPRENE BLADE
9	1	PUS016076	BZE6 2RG SWITCH
8	2	P22000316	2HP@1450RPM 380V MOTOR
7	2	P16000060	RCL 1 15/16 BEARING
6	1	P53000469	3/8" LEXAN WINDOW
5	1	FS3000468	WINDOW FRAME
4	4	P35000016	LATCH AI-11-702-20
3	1	SS3000524	MOTOR MOUNT ASSY
2	1	SS3000472	FLAT DIFFER ASSY
1	1	SS3000532	HVD130 SUB ASSY

**FIBER CONTROLS**  
A FIBER OPTICS CORPORATION  
P.O. BOX 289  
GROTON, CT 06340

FILE: HVD-130 X 60"  
DATE: 4-10-00  
DRAWN BY: JDM  
CHK: MVA  
DESIGN: MVA

REV. BY: DATE

ITEM RECD. PART NO. DESCRIPTION

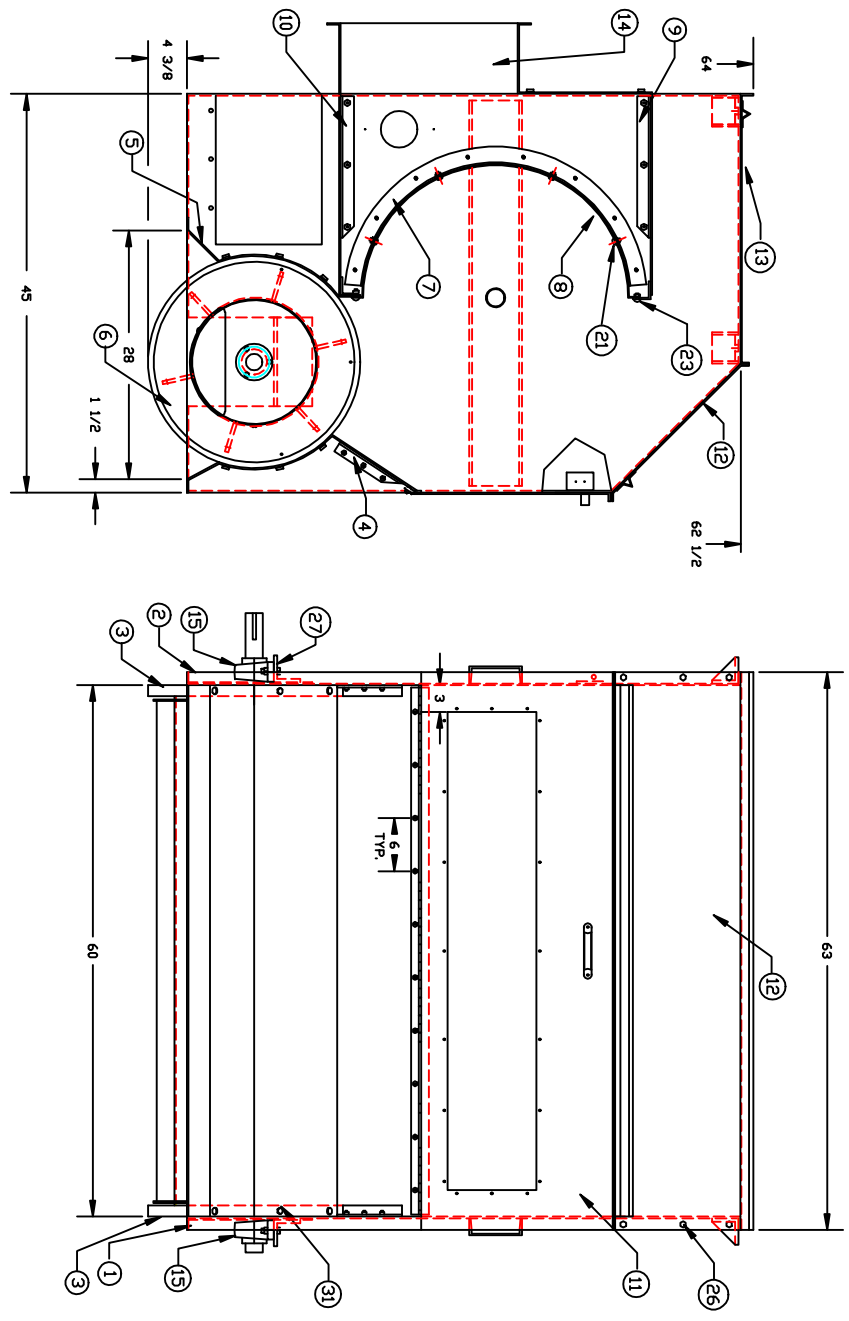
ITEM RECD. PART NO. DESCRIPTION

ASSY W/SP. MOTORS  
HVD-130  
MVA DSPREV

PART NO. A53000023

LETTER REVISION DATE

PART NO.  
S53000532  
REV.



ITEM	REQ'D.	PART NO.	DESCRIPTION
34	2	P38600004	1/4 B.S. FLAT WASHER
33	-	---	---
32	2	P38400408	1/4-20X1/2 HH. BOLT
31	18	P38400612	3/8-16X3/4 HH. BOLT
30	4	P38600008	1/2 FLAT WASHER
29	4	P38620008	1/2 LOCK WASHER
28	4	P38500813	1/2-13 HEX NUT
27	4	P38400832	1/2-13X2 HH. BOLT
26	66	P38400412	1/4-20X3/4 HH. CAP SCE.
25	78	P38500420	1/4-20 HEX NUT
24	78	P38620004	1/4 B.S. LOCK WASHER
23	32	P38870412	1/4-20X3/4 BUT. HD. SCR.
22	36	P38580420	1/4-20 LOCK NUT
21	15	P38870408	1/4-20X1/2 BUT. HD. SCR.
20	8	P38500616	3/8-16 LOCK NUT
19	24	P38620006	3/8 LOCK WASHER
18	8	P38870616	3/8-16X1 BUT. HD. SCR.
17	-	---	---
16	-	---	---
15	2	P16000056	BEARING RAK 1 15/16"
14	2	F53000118	BAFFEL END PIECE
13	1	S53000448	TOP COVER ASSY
12	1	S53000240	FRONT TOP COVER ASSY
11	1	S53000466	DDDR ASSEMBLY
10	1	S53000461	OUTLET COVER ASSY
9	1	S53000463	INLET COVER ASSY
8	1	NP	DISPREY SP. INT. SCR.
7	2	F53000104	INT. SCREEN CHEEK
6	1	S53000446	EXTERNAL DIFFER ASSY
5	1	F53000230	EXTERNAL DIFFER COVER
4	1	S53000226	EXTERNAL DIFFER SLIDE
3	2	F53000319	EXTERNAL DIFFER HEAD
2	1	S53000330	L.H. SIDE PANEL ASSY
1	1	S53000329	R.H. SIDE PANEL ASSY

FILE	TOLERANCES UNLESS OTHERWISE SPECIFIED	UNIT	
DATE	FRACTIONAL & DECIMAL	FRACTION	
REV. BY	DECIMAL & SCALE 1:10	FRESH	
DATE	DRAWN BY JDM		
REV. BY	DATE 4-10-00		

**FIBER CONTROLS**  
F.A. 2000  
F.A. 2000  
F.A. 2000  
F.A. 2000

NAME	HVD-130 X 60	PART NO.	S53000532
SUB. ASSY	W/SP. INT SCR.		
MO. NO.	HVD-130		
MA	DISPREY		