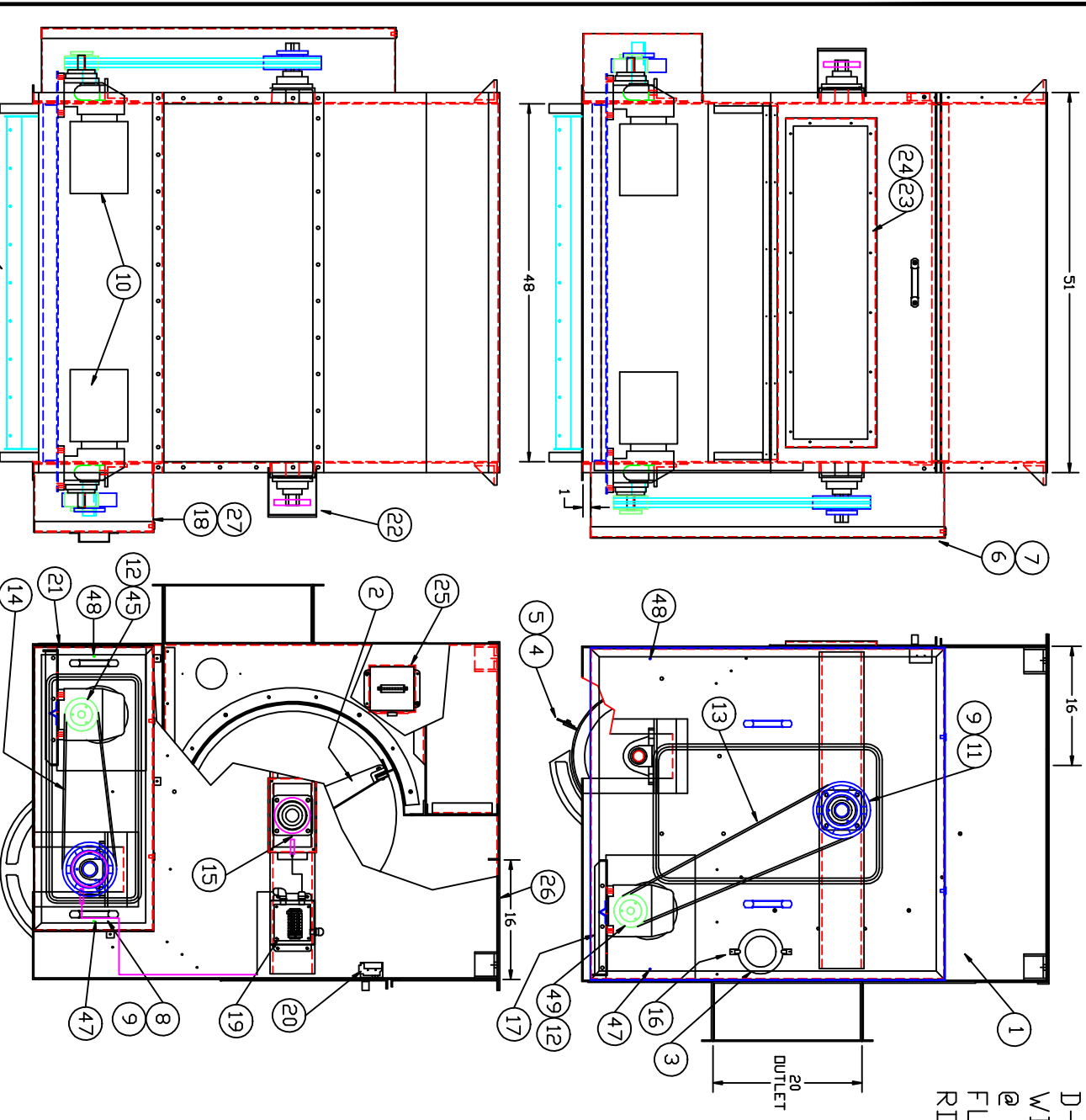


PART NO. A53000030
REV.

D-130 IS SET TO RUN WITH 60Hz MOTORS @ 400rpm OUTPUT
FL. DOFFER SPEED = 225 RPM
RD. DOFFER SPEED = 247 RPM



ITEM	REQ'D	PART NO.	DESCRIPTION
49	1	P19000068	2TB 5.0 SHEAVE
48	2	P35000128	LH DDDR LATCH
47	2	P35000129	RH DDDR LATCH
46	1	F53000541	8mm PRDX SV. BRKT SHORT
45	1	P19000153	2TB 4.8 SHEAVE
44	2	NPN	SENSOR TARGET (OSPREY)
43	2	PUS016392	WK4T6P7X2 TURK CABLE
42	2	PUS016391	B14-M12-AP6X-1141 TURK SENSOR
41	6	NPN	M10 x M19 HH BOLT
40	36	NPN	M6 LOCK WASHER
39	36	NPN	M6 FLAT WASHER
38	16	NPN	M10 NUT
37	16	NPN	M10 LOCK WASHER
36	16	NPN	M10 FLAT WASHER
35	36	NPN	M6 x M16 HH. BOLT
34	8	NPN	M10 x 89M CARR. BOLT
33	4	P14000226	SWEGLOCK 90° CONN.
32	5	P14000225	SWEGLOCK STRAIGHT CONN.
31	24	P14000224	1/8" STEEL TUBING
30	2	F53000543	LUB BLOCK
29	2	P35000128	GUARD DDDR LATCH LH
28	2	P35000129	GUARD DDDR LATCH RH
27	1	S53000563	MOTOR GUARD COVER
26	1	F53000602	FILL-IN
25	1	SEL260202	MOTOR BOX
24	1	F53000498	WINDOW
23	1	F53000497	WINDOW FRAME
22	1	S53000601	BEARING SHAFT GUARD
21	1	F53000300	FRONT MOTOR COVER
20	1	S90000180	SAFETY SWITCH ASSY
19	1	SEL260203	CONTROL BOX
18	1	S53000554	MOTOR GUARD
17	1	S53000625	MOTOR BASE OSPREY
16	4	P35000042	SPRING FASTNER
15	2	P16000183	RCJ M45 BEARING
14	2	P15000036	B-60 BELT
13	2	P15000051	B-81 BELT
12	2	P20000010	P1-25mm BUSHING
11	1	P19000079	2TB 9.0 SHEAVE
10	2	NPN	RX67 DT90 SEW GEAR MOTOR
9	2	P20000011	Q1-45mm BUSHING
8	1	P19000077	2TB 8.0 SHEAVE
7	1	S53000618	DRIVE GUARD COVER
6	1	S53000488	DRIVE GUARD
5	6	F53000506	BLADE RETAINER
4	6	F53000505	NEOPRENE BLADE
3	2	P50000175	6" PLEXIGLASS COVER
2	1	S53000585	METRIC FLAT DDIFFER ASSY
1	1	S53000583	OSPREY METRIC SUB ASSY

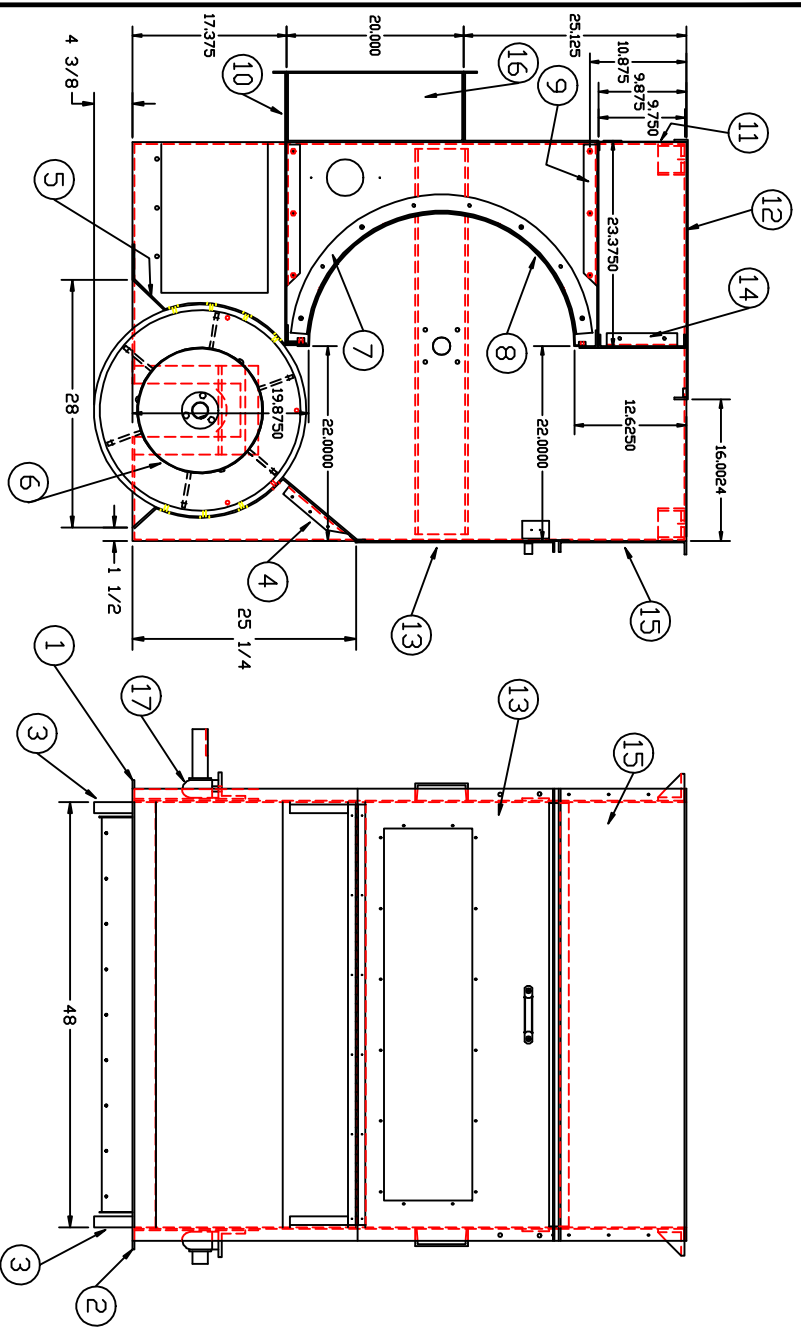
LETTER	REVISION	REV BY	DATE

FILE	TOLERANCES UNLESS OTHERWISE SPECIFIED	MULT.
DATE	FRACTIONAL & DECIMAL	
APP		
DES		
DRAWN BY	JJM	
CHK		
DATE	1-15-01	

FIBER CONTROLS A FULL SERVICE CORPORATION P.O. BOX 300 GARDNER, NY 13046	MADE IN U.S.A.

NAME	DESCRIPTION
OSPREY METRIC	
HVA-130 x 48"	
TOP INLET ASSY	
MODEL	
GLOBAL UNIT	
PART NO.	A53000030

PART NO. S53000583
REV.



ITEM	REQ'D.	PART NO.	DESCRIPTION
40	-	---	---
39	-	---	---
38	-	---	---
37	-	---	---
36	-	---	---
35	-	---	---
34	2	NPN	M6 FLAT WASHER
33	2	NPN	M6 x 12 HH. BOLT
32	18	NPN	M10 x 20 HH. BOLT
31	4	NPN	M13 FLAT WASHER
30	4	NPN	M13 LOCK WASHER
29	4	NPN	M13 HEX NUT
28	4	NPN	M13 x 50.8 HH. BOLT
27	66	NPN	M6 x 20 HH. CAP SCR.
26	78	NPN	M6 HEX NUT
25	78	NPN	M6 B.S. LOCK WASHERS
24	32	NPN	M6 x 20 BUT. HD. SCR.
23	36	NPN	M6 LOCK NUT
22	15	NPN	M6 x 12 BUT. HD. SCR.
21	8	NPN	M10 LOCK NUT
20	24	NPN	M10 LOCK WASHERS
19	8	NPN	M10 x 25.4 BUT. HD. SCR.
18	-	---	---
17	2	PL6000182	RAK M45 BEARING
16	2	F5300617	BAFFLE END PIECE
15	1	S5300616	TDP BACK COVER ASSY
14	1	S5300424	INLET COVER INSIDE
13	1	S5300496	CLEANOUT DDDR ASSY
12	1	S5300609	TDP COVER
11	1	F5300289	INLET COVER
10	1	S5300614	DUTLET COVER ASSY
9	1	S5300612	INLET COVER ASSY
8	1	S5300591	DIFFER SCREEN COATED
7	2	S5300589	INT. SCREEN CHEEK
6	1	S5300588	EXTERNAL DIFFER ASSY
5	1	F53000551	EXTERNAL DIFFER COVER
4	1	S5300153	EXTERNAL DIFFER SLIDE
3	2	F5300482	EXTERNAL DIFFER HEAD
2	1	S5300479	RH SIDE PANEL
1	1	S5300478	LH SIDE PANEL

LETTER	REVISION	REV. BY	DATE

FILE	TOLERANCES UNLESS OTHERWISE SPECIFIED	MTL
DATE	FRACTIONAL & DECIMAL S	FRACTION
APP	MINIMUM S	1=1
DES	BY	JJM
CHK	DATE	8-22-00

FIBER CONTROLS
A FIBER OPTICS CORPORATION
P.O. BOX 399
GROTON, CT 06340

NAME: DSPREY METRIC
HVD-130 x 48"
SUB ASSY

MOCK: _____
MVA: _____

PART NO. S53000583