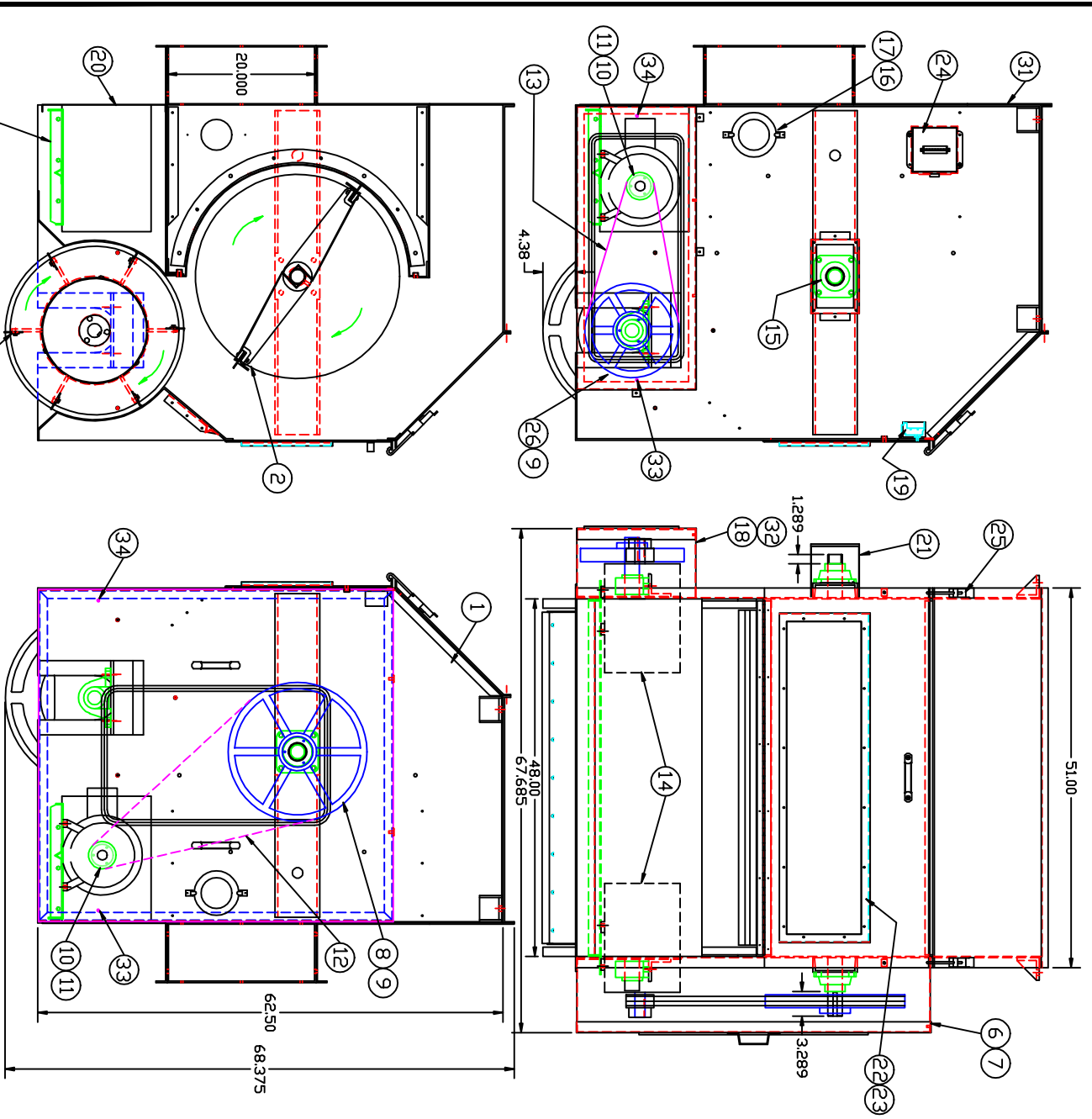


PART NO.  
AS3300025  
REV.

NOTE:  
THIS ASS'Y HAS A  
SPECIAL INT. SCREEN  
BY DSPREY CORP.  
FLAT DOFFER - 175 RPM  
ROUND DOFFER - 250 RPM



ITEM	QTY	REGR.	PART NO.	DESCRIPTION
40	-	-	---	---
39	-	-	---	---
38	-	-	---	---
37	-	-	---	---
36	-	-	---	---
35	-	-	---	---
34	2		P35000128	GUARD DOOR LATCH LH
33	2		P35000129	GUARD DOOR LATCH RH
32	1		SS3000563	MOTOR GUARD COVER
31	1		F53000558	FILL IN
30	4		P14000226	SWEGLOCK 90° CONN.
29	5		P14000225	SWEGLOCK STRAIGHT CONN
28	24		P14000224	1/8" STEEL TUBING
27	2		F53000543	LUB BLOCK
26	1		P19000081	RTB 12.4 SHEAVE
25	2		P35000116	LATCH A1-11-702-20
24	1		SS3000361	JUNCTION BOX
23	1		P53000498	WINDOW
22	1		F53000497	WINDOW FRAME
21	1		F53000540	BEARING GUARD
20	1		F53000300	FRONT MOTOR COVER
19	1		S90000180	SAFETY SWITCH ASS'Y
18	1		SS3000554	MOTOR GUARD
17	4		P35000042	SPRING FASTENER
16	2		P50000175	6" PLEXIGLASS COVER
15	2		P16000060	RCJ 1 15/16 BEARING
14	2		P22000279	2HP 900RPM 460V MOTOR
13	2		P15000037	B-62 BELT
12	2		P15000056	B-90 BELT
11	2		P20000016	P1-1 3/8 BUSHING
10	2		P19000064	3.4 MOTOR SHEAVE
9	2		P20000045	Q1-1 15/16 BUSHING
8	1		P19000084	RTB 18.4 SHEAVE
7	1		SS3000565	DRIVE GUARD COVER
6	1		SS3000488	DRIVE GUARD
5	6		F53000506	BLADE RETAINER
4	6		F53000505	NEOPRENE BLADE
3	1		SS3000456	48" MOTOR BASE ASS'Y
2	1		SS3000569	FLAT DOFFER ASS'Y SP.
1	1		SS3000573	DSPREY SUB ASS'Y

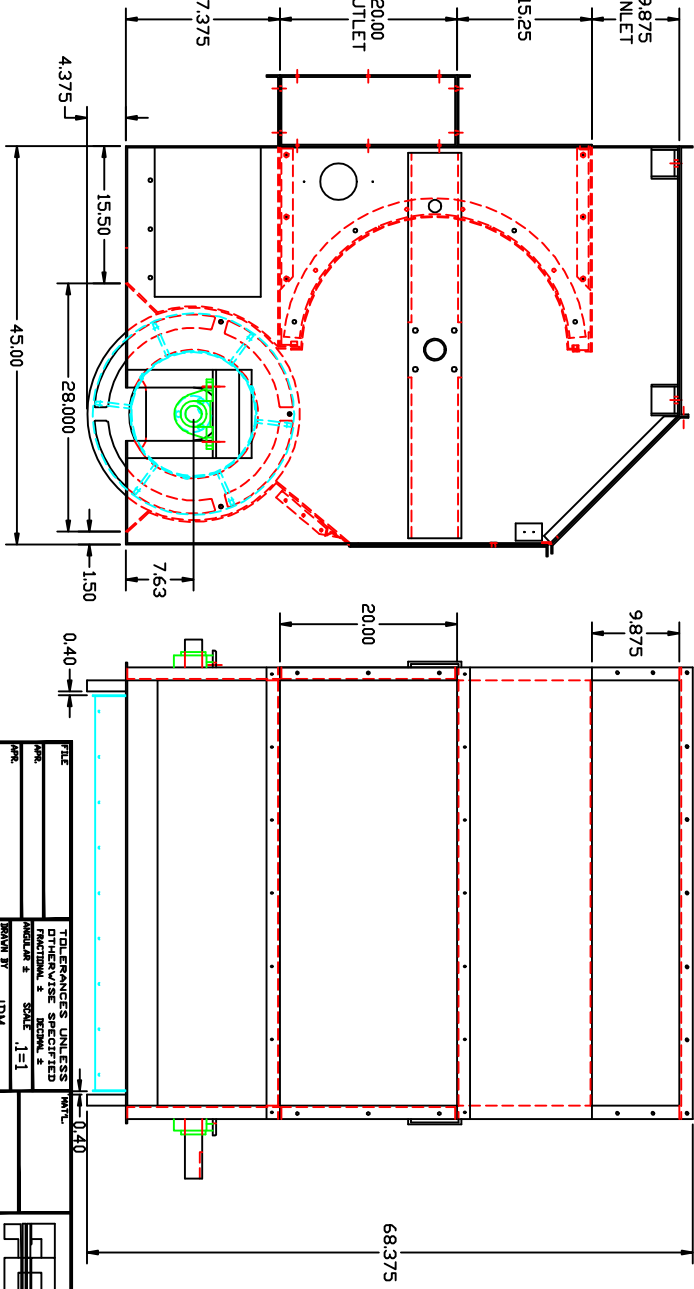
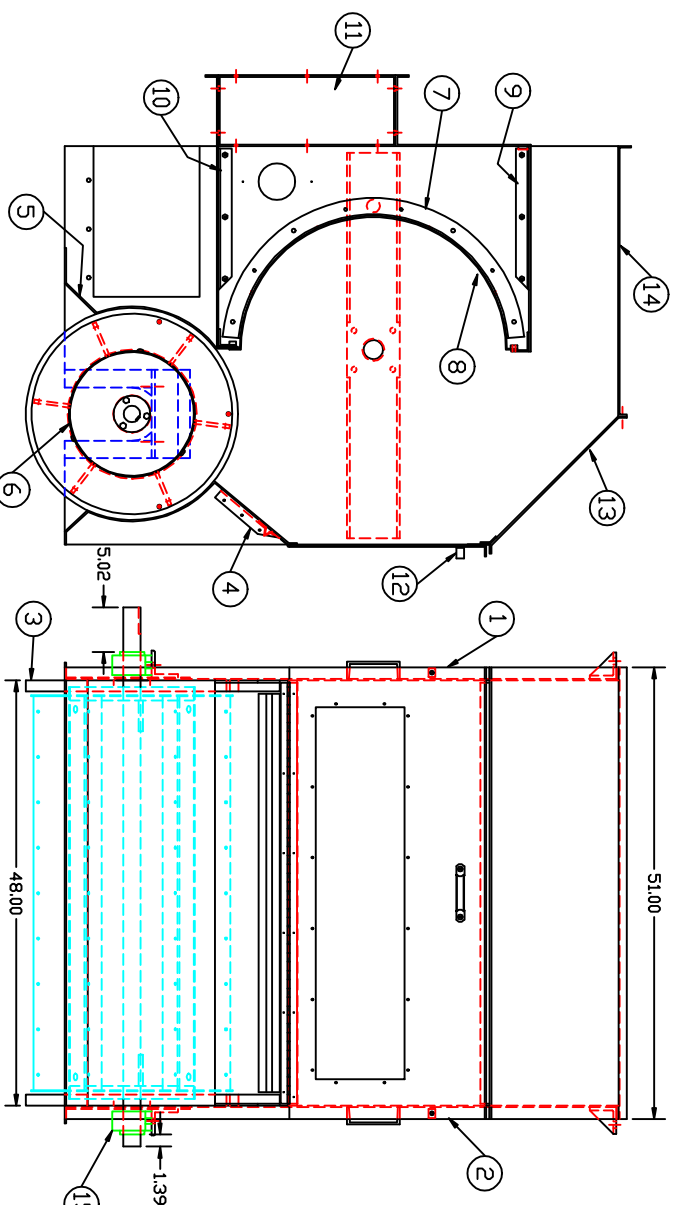
LETTER	REVISION	REV. BY	DATE

TITLE	TOLERANCES UNLESS OTHERWISE SPECIFIED
SCALE	FRACTIONS & DECIMALS
SCALE	1=1
DESIGNED BY	DATE
CHKD BY	8-11-00
APP'D BY	
DATE	

**FIBER CONTROLS**  
A FIBER OPTIC SYSTEMS CORPORATION  
2400 S.W. 10TH AVENUE  
MIAMI, FL 33135

NAME: HVD-130 x 48" ASS'Y (DSPREY)  
PART NO.: AS3300025

PART NO.  
SS3000573  
REV.



ITEM	QTY	PART NO.	DESCRIPTION
40	--	---	---
39	--	---	---
38	--	---	---
37	--	---	---
36	--	---	---
35	--	---	---
34	--	---	---
33	--	---	---
32	--	---	---
31	4	P38620008	1/2 FLAT WASHER
30	4	P38620008	1/2 LOCK WASHER
29	4	P38500813	1/2-13HEX NUT
28	4	P38400832	1/2-13x2 HH. BOLT
27	2	P38600004	1/4 B.S. FLAT WASHER
26	2	P38400408	1/4-20x1/2 HH. BOLT
25	66	P38400412	1/4-20x3/4 HH. CAP SCR.
24	78	P38500420	1/4-20 HEX NUT
23	78	P38620004	1/4 B.S. LOCK WASHER
22	32	P38870412	1/4-20x3/4 BUT. HD. SCR.
21	36	P38580420	1/4-20 LOCK NUT
20	15	P38870408	1/4-20x1/2 BUT. HD. SCR.
19	18	P38400612	3/8-16x3/4 HH. BOLT
18	8	P38500616	3/8-16 LOCK NUT
17	24	P38620006	3/8 LOCK WASHER
16	8	P38870616	3/8-16x1 BUT. HD. SCR.
15	2	P16000056	RAK 1 15/16 BEARING
14	1	F53000117	TOP COVER ASSY
13	1	S53000158	FRONT TOP COVER ASSY
12	1	S53000496	DOOR ASSEMBLY
11	2	F53000118	BAFFLE END PIECE
10	1	S53000481	DUTLET COVER ASSY
9	1	S53000494	INLET COVER ASSY
8	1	S53000574	INT. SCREEN ASSY COATED
7	2	S53000559	INTERNAL SCREEN CHECK
6	1	S53000570	EXTERNAL DIFFER ASSY
5	1	F53000051	EXTERNAL DIFFER COVER
4	1	S53000153	EXTERNAL DIFFER SLIDE
3	2	F53000319	EXTERNAL DIFFER HEAD
2	1	S53000549	L.H. SIDE PANEL ASSY
1	1	S53000548	R.H. SIDE PANEL ASSY

DATE	SCALE	TOLERANCES UNLESS OTHERWISE SPECIFIED
REV. BY	DATE	REVISION
DATE	REV. BY	DATE

**FIBER CONTROLS**  
A FAYAT SYSTEMS CORPORATION  
2000 W. 10TH AVE. DENVER, CO. 80202

MODEL: AS3000024 PART NO.: SS3000573

NAME: HVD-130 x 48"  
SUB ASSY (DSPREY)