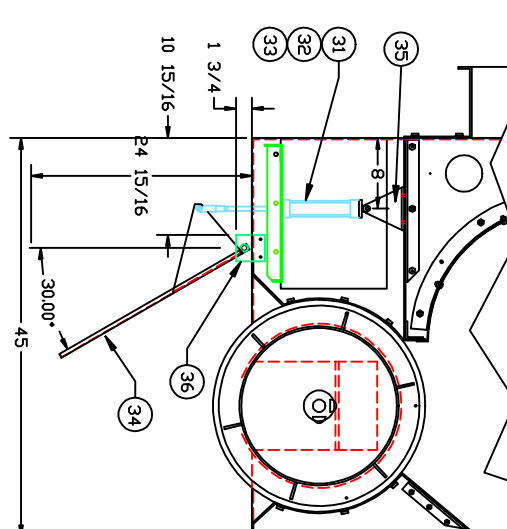
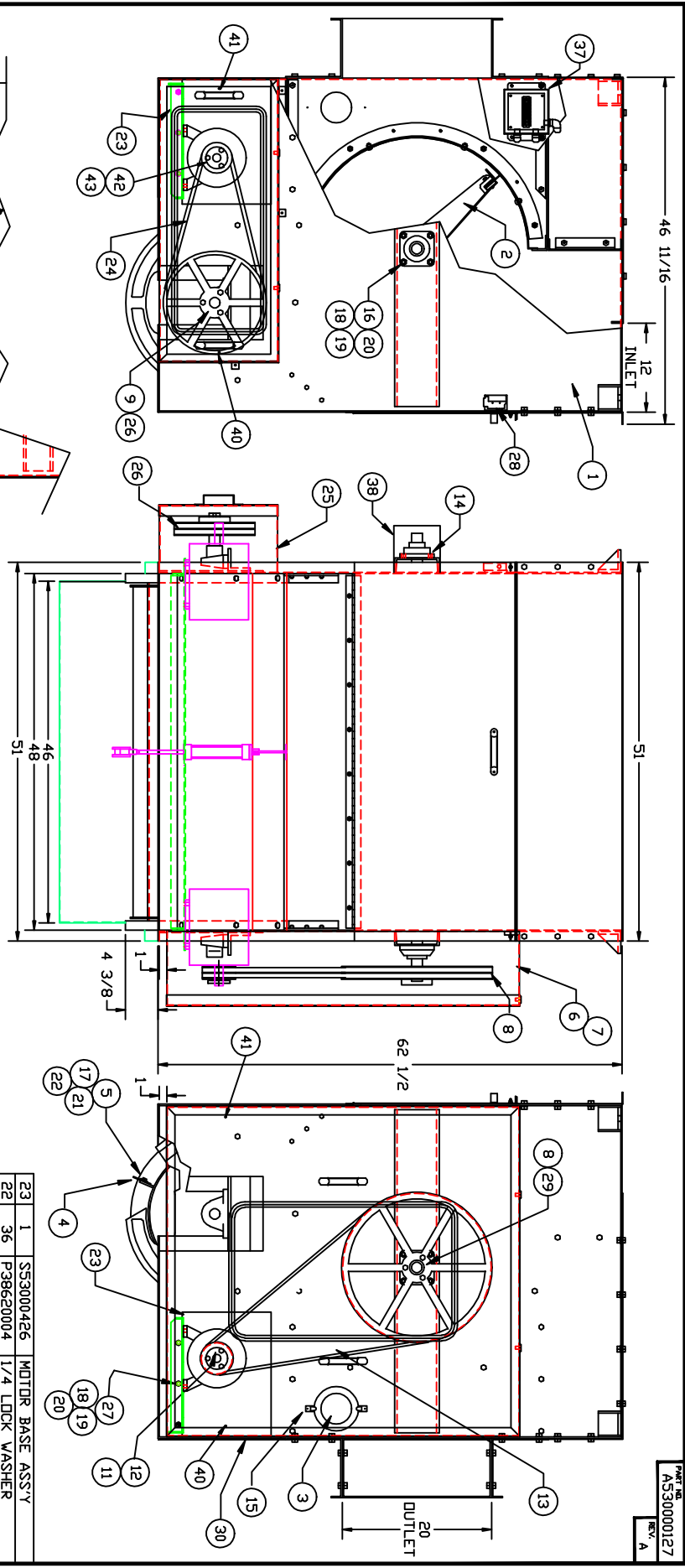


PART NO. AS3000127  
REV. A



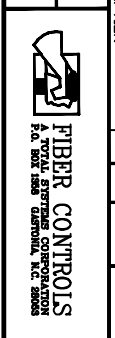
Al8482h-250-600-63-N11-0  
MILLER FLUID POWER

ITEM	REQ'D.	PART NO.	DESCRIPTION
43	1	P20000121	SH x 1 1/8 BUSHING
42	1	P19000182	2B38 SH SHEAVE
41	2	P35000128	LH DDDR LATCH
40	2	P35000129	RH DDDR LATCH
39	1	SS3000563	GUARD DDDR
38	1	SS3000540	BEARING COVER
37	1	SS3000361	JUNCTION BDX
36	2	FS3000432	PIVET BLDKS
35	2	FS3000431	MOUNTING ANGLE
34	1	SS3000430	DIVERIER DDDR ASSY
33	1	P29000012	MOUNTING BRACKET
32	1	P29000011	CLEVIS
31	1	P29000010	AIR CYLINDER
30	1	FS3000300	FRONT MOTOR COVER
29	1	P20000040	Ø1 7/16 BORE
28	1	PUS016076	BZE6-2RQ MICRO S.W.
27	6	P38400612	3/8-16X3/4 HH. BOLT
26	1	P19000183	2B13.6 SK SHEAVE
25	1	SS3000554	MOTOR GUARD
24	2	P15000217	BX70 GRIPNOTCH BELT

ITEM	REQ'D.	PART NO.	DESCRIPTION
23	1	SS3000426	MOTOR BASE ASSY
22	36	P38620004	1/4 LOCK WASHER
21	16	P38600004	1/4 FLAT WASHER
20	16	P38680416	3/8-16 NUT
19	16	P38620006	3/8 LOCK WASHER
18	16	P38600006	3/8 FLAT WASHER
17	36	P38400410	1/4-20X 5/8 HH. BOLT
16	8	P38400656	3/8-16X3 1/2 CARB. BOLT
15	4	P35000042	SPRING FASTNER
14	2	P16000039	PCJN - 1 7/16 BEARING
13	2	P15000059	BELT B-97
12	1	P20000013	P-1-1 1/8 BUSHING
11	1	P19000066	2T8.2 SHEAVE
10	2	P22000182	MOTOR ZHP, 1200RPM/460V
9	1	P20000085	SK x 1 7/16 BUSHING
8	1	P19000085	2T820.0 SHEAVE
7	1	SS3000618	DRIVE GUARD DDDR
6	1	SS3000488	DRIVE GUARD
5	6	FS2000152	BLADE RETAINER
4	6	FS3000161	NEPRENE BLADE
3	2	P5000175	6° PLEXIGLASS COVER
2	1	SS3000303	FLAT DDIFFER ASSY
1	1	SS3000268	D-130 SUB. ASSY

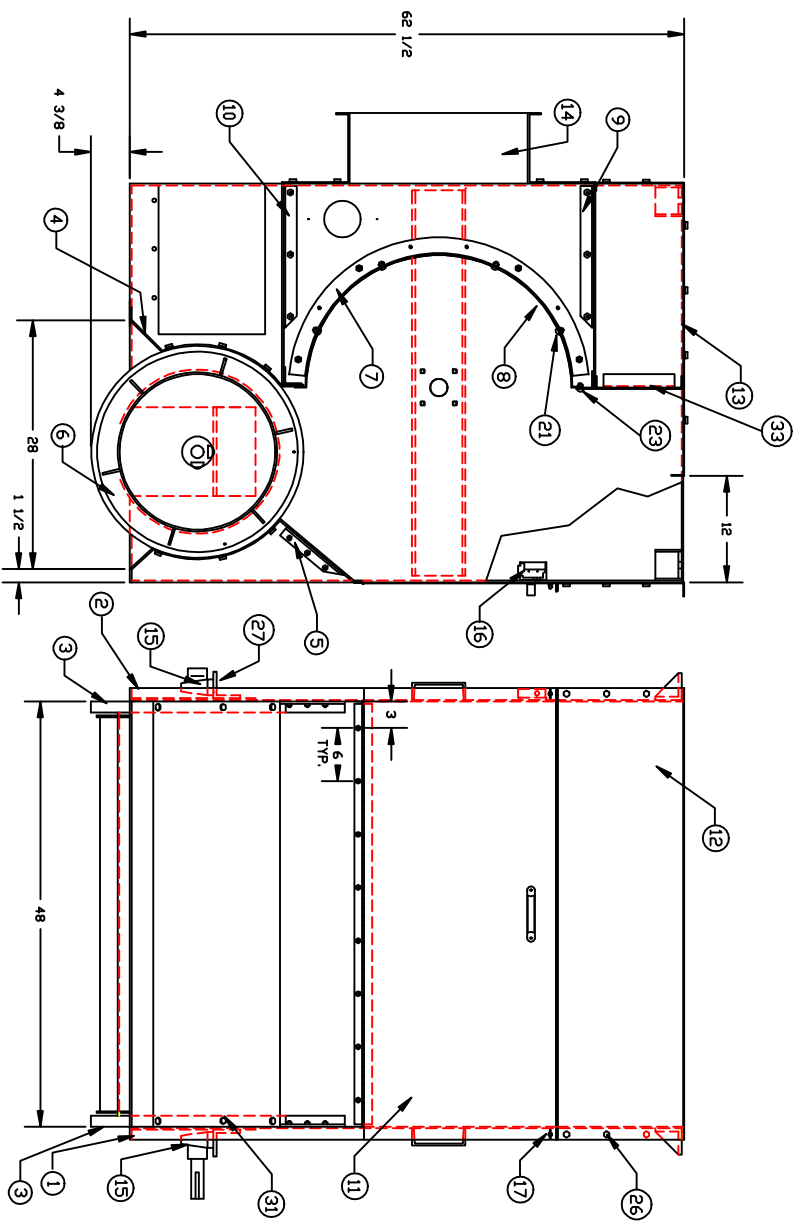
LETTER	ITEM	REVISION	GRF	REV. BY	DATE
A	ITEM 9 P20000085 WAS P20000120				

FILE	PART	DATE	DESIGNER	CHKD	DATE
			JJM		



NAME	PART NO.
D-130 X 48'	AS3000027
TOP INLET DIST	

PART NO. S53000268  
REV.



ITEM	QTY	PART NO.	DESCRIPTION
34	2	P38600004	1/4 B.S. FLAT WASHER
33	1	S53000622	INLET COVER INSIDE
32	2	P38400408	1/4-20X1/2 HH. BOLT
31	18	P38400612	3/8-16X3/4 HH. BOLT
30	4	P38600008	1/2 FLAT WASHER
29	4	P38620008	1/2 LOCK WASHER
28	4	P38500813	1/2-13 HEX NUT
27	4	P38400832	1/2-13X2 HH. BOLT
26	66	P38400412	1/4-20X3/4 HH. CAP SCE.
25	78	P38500420	1/4-20 HEX NUT
24	78	P38620004	1/4 B.S. LOCK WASHER
23	32	P38870412	1/4-20X3/4 BUT. HD. SCR.
22	36	P38580420	1/4-20 LOCK NUT
21	15	P38870408	1/4-20X1/2 BUT. HD. SCR.
20	8	P38500616	3/8-16 LOCK NUT
19	24	P38620006	3/8 LOCK WASHER
18	8	P38870616	3/8-16X1 BUT. HD. SCR.
17	2	P38470420	1/4-20 WING NUT
16	1	PUS016076	BZE6-2R0 MICRO SW.
15	2	P16000054	BEARING RAK 1 7/16
14	2	F53000118	BAFFEL END PIECE
13	1	F53000271	TOP FRONT COVER
12	1	S53000286	TOP BACK COVER ASSY
11	1	S53000186	DDDR ASSEMBLY
10	1	S53000259	OUTLET COVER ASSY
9	1	S53000123	INLET COVER ASSY
8	1	F53000120	DIFFER SCREEN
7	2	F53000104	INT. SCREEN CHECK
6	1	S53000154	EXTERNAL DIFFER ASSY
5	1	F53000152	EXTERNAL DIFFER COVER
4	1	S53000153	EXTERNAL DIFFER SLIDE
3	2	P53000148	EXTERNAL DIFFER HEAD
2	1	S53000267	L.H. SIDE PANEL ASSY
1	1	S53000266	R.H. SIDE PANEL ASSY

LETTER	REVISION	REV. BY	DATE
<p>TOLERANCES UNLESS OTHERWISE SPECIFIED          FRACTIONS &amp; DECIMALS          FRACTIONAL &amp; DECIMALS          DRAWN BY RCL          DATE 5-29-92</p>			
FILE	MTL	<p>FIBER CONTROLS          F.A. PANEL DIFFER COVER ASSY          PART NO. S53000268</p>	
APP.:	FRSH:	MO.:	PART NO.:
DES:		D-130	S53000268