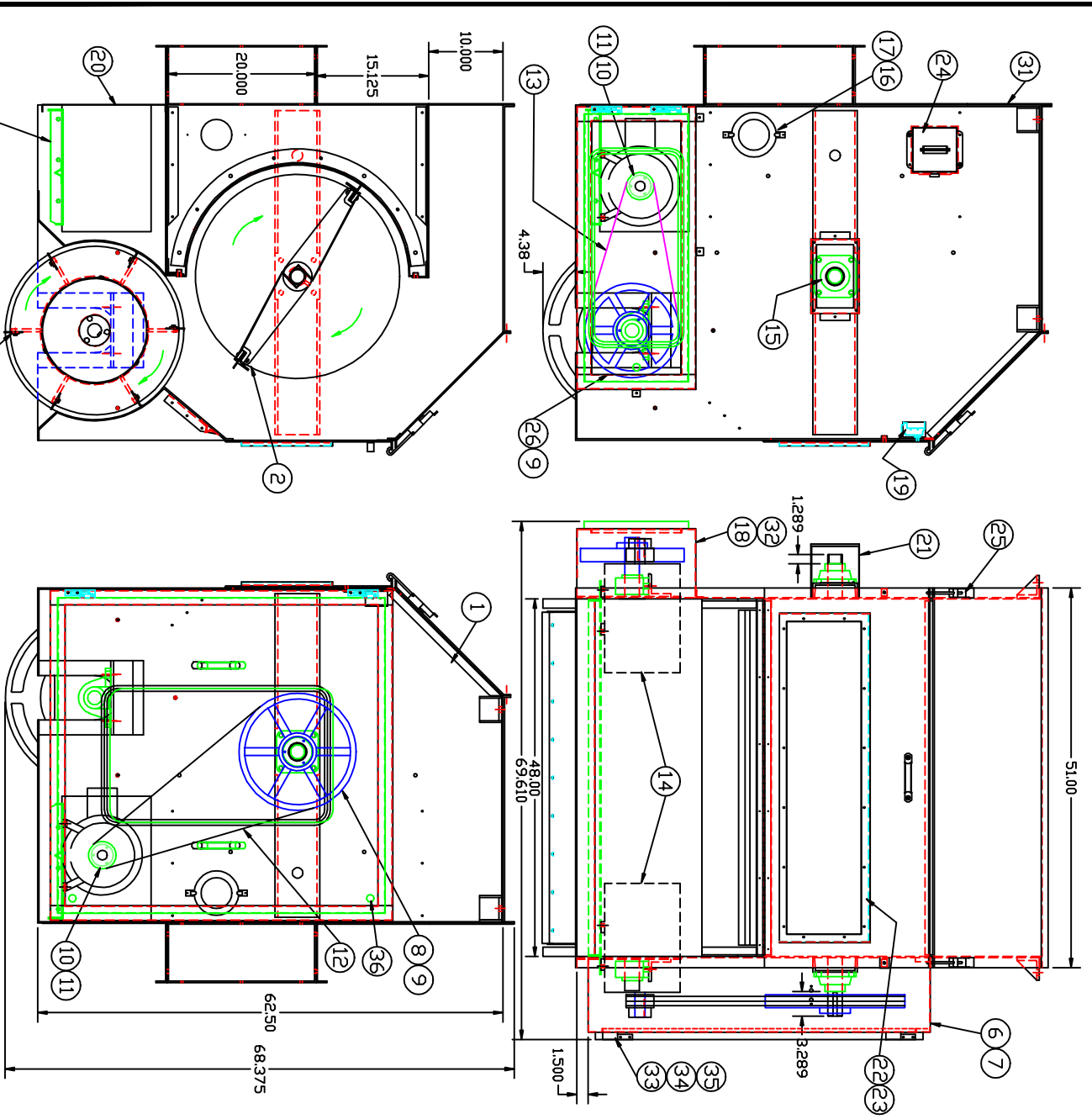


PART NO.
AS3000029
REV.

NOTE:
THIS ASS'Y HAS A
SPECIAL INT. SCREEN
BY DSPREY CORP.
FLAT DOFFER - 200-225 RPM
ROUND DOFFER - 250 RPM



ITEM	QTY	REGR.	PART NO.	DESCRIPTION
40	-	-	-	-
39	-	-	-	-
38	-	-	-	-
37	-	-	-	-
36	3	-	P35000102	E3-S5-715-75 LATCH
35	4	-	P38840880	1/4x2 1/2 SPRING PIN
34	4	-	P71000213	MALE HINGE
33	4	-	P71000212	FEMALE HINGE
32	1	-	S53000661	MOTOR GUARD COVER
31	1	-	F53000639	FILL IN
30	4	-	P14000226	SWGLDCK 90° CONN.
29	5	-	P14000225	SWGLDCK STRAIGHT CONN
28	24	-	P14000224	1/8" STEEL TUBING
27	2	-	F53000543	LUB BLCKD
26	1	-	P19000081	2TB 12.4 SHEAVE
25	2	-	P35000116	LATCH A1-11-702-20
24	1	-	S53000361	JUNCTION BOX
23	1	-	P53000498	WINDOW
22	1	-	F53000497	WINDOW FRAME
21	1	-	S53000540	BEARING GUARD
20	1	-	F53000300	FRONT MOTOR COVER
19	1	-	S90000180	SAFETY SWITCH ASS'Y
18	1	-	S53000655	MOTOR GUARD
17	4	-	P35000042	SPRING FASTNER
16	2	-	P50000175	6' PLEXIGLASS COVER
15	2	-	P16000060	RCJ 1 15/16 BEARING
14	2	-	P22000279	2HP 900RPM 460V MOTOR
13	2	-	P15000037	B-62 BELT
12	2	-	P15000053	B-83 BELT
11	2	-	P20000016	P1-1 3/8 BUSHING
10	2	-	P19000064	3.4 MOTOR SHEAVE
9	2	-	P20000045	Q1-1 15/16 BUSHING
8	1	-	P19000082	2TB 15.4 SHEAVE
7	1	-	S53000652	DRIVE GUARD COVER
6	1	-	S53000647	DRIVE GUARD
5	6	-	F53000506	BLADE RETAINER
4	6	-	F53000505	NEOPRENE BLADE
3	1	-	S53000456	48" MOTOR BASE ASS'Y
2	1	-	S53000569	FLAT DOFFER ASS'Y SP.
1	1	-	S53000627	DSPREY SUB ASS'Y

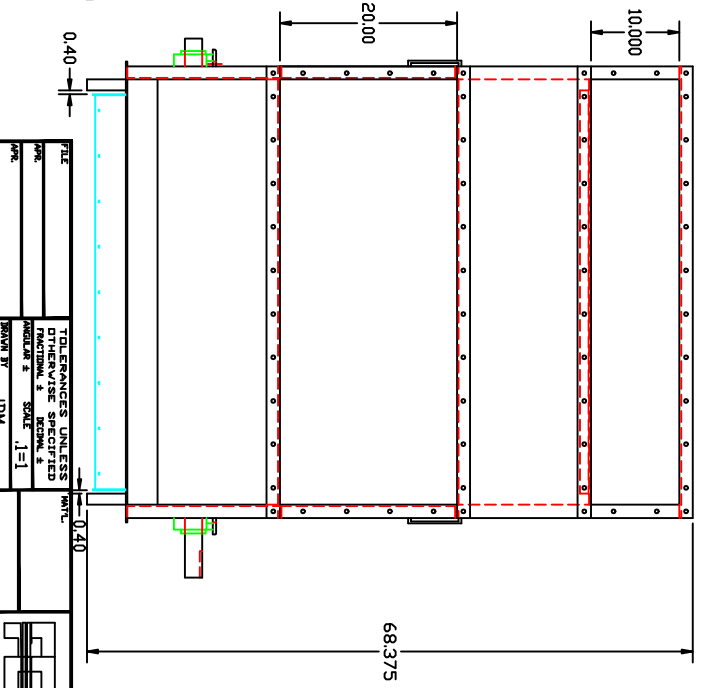
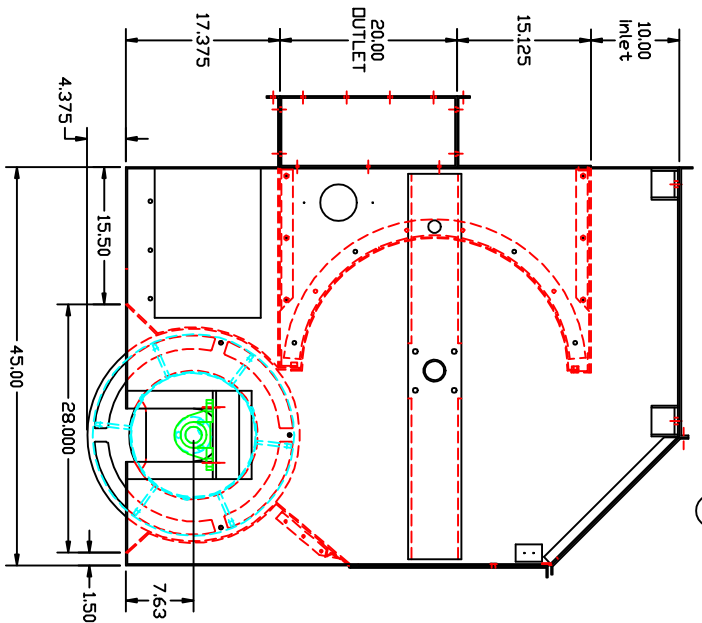
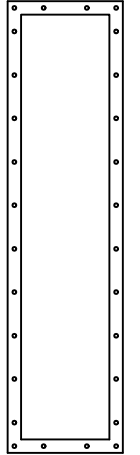
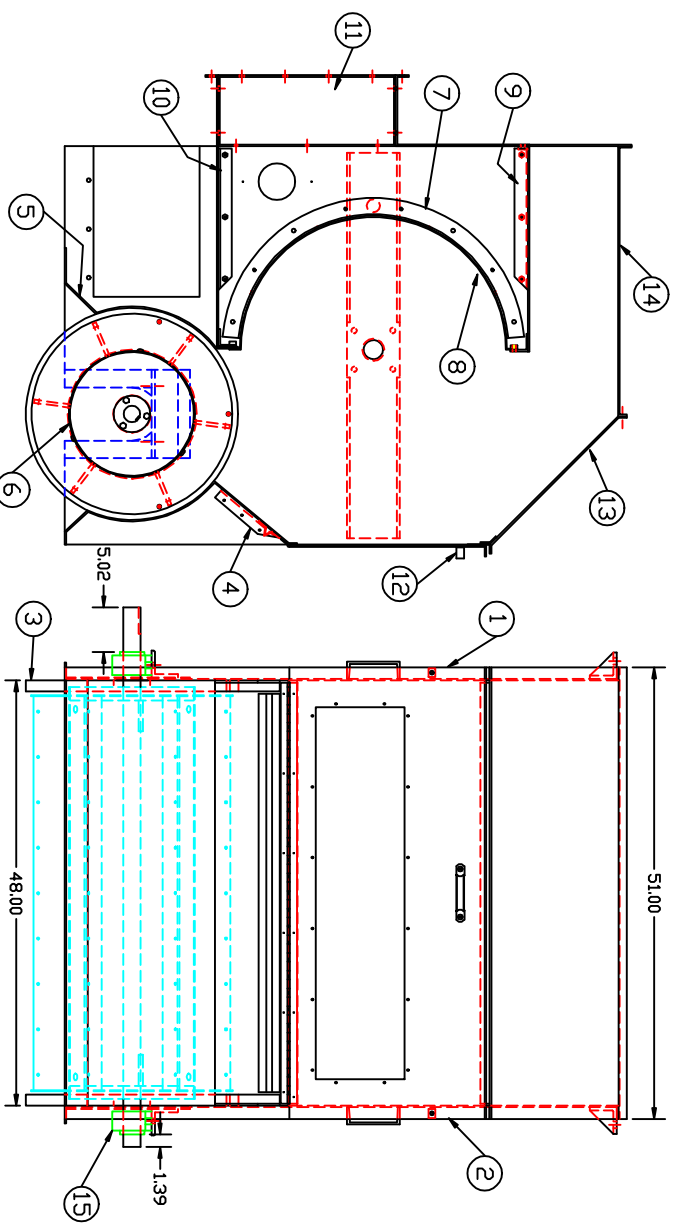
LETTER	REVISION	REV. BY	DATE

TITLE	TOLERANCES UNLESS OTHERWISE SPECIFIED
SCALE	FRACTIONAL & DECIMAL 1/16" = 1"
DATE	11-30-00
BY	JDM
CHECKED	
APP'D	

FIBER CONTROLS
A FIBER OPTIC SYSTEMS CORPORATION
2000 W. 10TH AVE. DENVER, CO. 80202

NAME: HVD-130 x 48" ASS'Y (DSPREY)
PART NO.: AS3000029

MADE IN: DSPREY LAB



ITEM	QTY	REGRD.	PART NO.	DESCRIPTION
40	-	-	-	---
39	-	-	-	---
38	-	-	-	---
37	-	-	-	---
36	-	-	-	---
35	-	-	-	---
34	-	-	-	---
33	-	-	-	---
32	-	-	-	---
31	4		P38620008	1/2 FLAT WASHER
30	4		P38620008	1/2 LOCK WASHER
29	4		P38500813	1/2-13HEX NUT
28	4		P38400832	1/2-13x2 HH. BOLT
27	2		P38600004	1/4 B.S. FLAT WASHER
26	2		P38400408	1/4-20x1/2 HH. BOLT
25	66		P38400412	1/4-20x3/4 HH. CAP SCR.
24	78		P38500420	1/4-20 HEX NUT
23	78		P38620004	1/4 B.S. LOCK WASHER
22	32		P38870412	1/4-20x3/4 BUT. HD. SCR.
21	36		P38580420	1/4-20 LOCK NUT
20	15		P38870408	1/4-20x1/2 BUT. HD. SCR.
19	18		P38400612	3/8-16x3/4 HH. BOLT
18	8		P38500616	3/8-16 LOCK NUT
17	24		P38620006	3/8 LOCK WASHER
16	8		P38870616	3/8-16x1 BUT. HD. SCR.
15	2		P16000056	RAK 1 15/16 BEARING
14	1		F53000117	TOP COVER ASSY
13	1		S53000158	FRONT TOP COVER ASSY
12	1		S53000496	DOOR ASSEMBLY
11	2		F53000617	BAFFLE END PIECE
10	1		S53000638	DUETLET COVER ASSY
9	1		S53000630	DISPREY INLET COVER ASSY
8	1		S53000571	DISPREY BONDED INT. SCREEN ASSY
7	2		S53000559	INTERNAL SCREEN CHECK
6	1		S53000570	EXTERNAL DIFFER COVER
5	1		F53000051	EXTERNAL DIFFER COVER
4	1		S53000153	EXTERNAL DIFFER SLIDE
3	2		F53000319	EXTERNAL DIFFER HEAD
2	1		S53000549	L.H. SIDE PANEL ASSY
1	1		S53000548	R.H. SIDE PANEL ASSY

LETTER	REVISION	REV. BY	DATE

TITLE	TOLERANCES UNLESS OTHERWISE SPECIFIED
SCALE	FRACTIONAL & DECIMAL 1:1
DATE	11-30-00
DESIGNER	JDM
CHECKED	



NAME	HVD-130 x 48"
DESCRIPTION	SUB ASSY (DISPREY)
REV. NO.	AS3000029
PART NO.	S53000627

PART NO.
S53000627
REV.