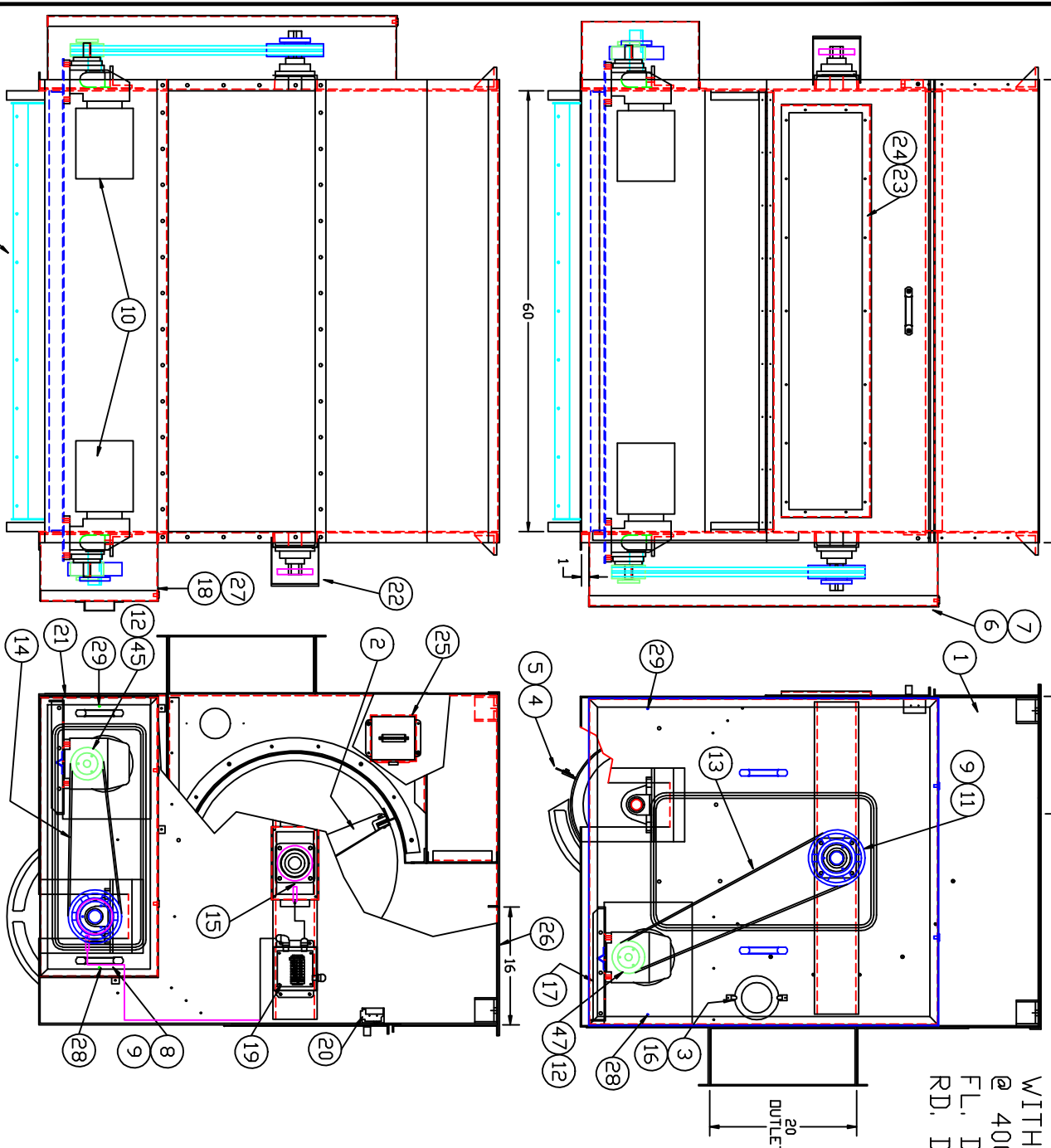


D-130 IS SET TO RUN
 WITH 60hz MOTORS
 @ 400rpm OUTPUT
 FL. DOFFER SPEED = 225 RPM
 RD. DOFFER SPEED = 247 RPM

PART NO. A53000032
 REV.



ITEM	RECD.	PART NO.	DESCRIPTION
47	1	P19000068	2TB 5.0 SHEAVE
46	1	F53000541	8mm PRDX SV. BRKT SHORT
45	1	P19000153	2TB 4.8 SHEAVE
44	2	NPN	SENSOR TARGET (DSPREY)
43	2	PUS016392	WK4T6P7X2 TURK CABLE
42	2	PUS016391	BI4-M12-AP6X-1141 TURK SENSOR
41	6	NPN	M10 x M19 HH BOLT
40	36	NPN	M6 LOCK WASHER
39	36	NPN	M6 FLAT WASHER
38	16	NPN	M10 NUT
37	16	NPN	M10 LOCK WASHER
36	16	NPN	M10 FLAT WASHER
35	36	NPN	M6 x M16 HH. BOLT
34	8	NPN	M10 x 89M CARR. BOLT
33	4	P14000226	SWEGLOCK 90° CONN.
32	5	P14000225	SWEGLOCK STRAIGHT CONN.
31	24	P14000224	1/8" STEEL TUBING
30	2	F53000543	LUB BLOCK
29	2	P35000128	GUARD DOOR LATCH LH
28	2	P35000129	GUARD DOOR LATCH RH
27	1	S53000563	MOTOR GUARD COVER
26	1	F53000685	TOP INLET FILL-IN
25	1	SEL260202	MOTOR BOX
24	1	F53000469	MOTOR FRAME
23	1	F53000468	WINDOW
22	1	S53000601	BEARING SHAFT GUARD
21	1	F53000301	FRONT MOTOR COVER
20	1	S90000180	SAFETY SWITCH ASSY
19	1	SEL260203	CONTROL BOX
18	1	S53000554	MOTOR GUARD
17	1	S53000626	MOTOR BASE DSPREY
16	4	P35000042	SPRING FASTNER
15	2	P16000183	RCJ M45 BEARING
14	2	P15000036	B-60 BELT
13	2	P15000051	B-81 BELT
12	2	P20000110	P1-25mm BUSHING
11	1	P19000079	2TB 9.0 SHEAVE
10	2	NPN	RX67 DT90 SEW GEAR MOTOR
9	2	P20000111	Q1-45mm BUSHING
8	1	P19000077	2TB 8.0 SHEAVE
7	1	S53000618	DRIVE GUARD COVER
6	1	S53000488	DRIVE GUARD
5	6	F53000444	BLADE RETAINER
4	6	F53000443	NEPRENE BLADE
3	2	P50000175	6" PLEXIGLASS COVER
2	1	S53000683	METRIC FLAT DEFER ASSY
1	1	S53000664	DSPREY METRIC SUB ASSY

LETTER	REVISION	REV BY	DATE
5	4		

FILE	MTL
DATE	
APP	
DESIGNED BY	
DRAWN BY	
CHECKED BY	
DATE	
TOLERANCES UNLESS OTHERWISE SPECIFIED	
FRACTIONS & DECIMALS	
FRACTIONS 1/16" 1/8" 1/4" 3/8" 1/2" 5/8" 3/4" 7/8"	
DECIMALS .0005 .001 .002 .005 .01 .02 .05 .1 .2 .5 1	
FIT	
H7/g6	
H8/h7	
H9/d9	
H10/f9	
H11/h11	
H12/d11	
H13/f11	
H14/g11	
H15/h11	
H16/d11	
H17/f11	
H18/g11	
H19/h11	
H20/d11	
H21/f11	
H22/g11	
H23/h11	
H24/d11	
H25/f11	
H26/g11	
H27/h11	
H28/d11	
H29/f11	
H30/g11	
H31/h11	
H32/d11	
H33/f11	
H34/g11	
H35/h11	
H36/d11	
H37/f11	
H38/g11	
H39/h11	
H40/d11	
H41/f11	
H42/g11	
H43/h11	
H44/d11	
H45/f11	
H46/g11	
H47/h11	
H48/d11	
H49/f11	
H50/g11	
H51/h11	
H52/d11	
H53/f11	
H54/g11	
H55/h11	
H56/d11	
H57/f11	
H58/g11	
H59/h11	
H60/d11	
H61/f11	
H62/g11	
H63/h11	
H64/d11	
H65/f11	
H66/g11	
H67/h11	
H68/d11	
H69/f11	
H70/g11	
H71/h11	
H72/d11	
H73/f11	
H74/g11	
H75/h11	
H76/d11	
H77/f11	
H78/g11	
H79/h11	
H80/d11	
H81/f11	
H82/g11	
H83/h11	
H84/d11	
H85/f11	
H86/g11	
H87/h11	
H88/d11	
H89/f11	
H90/g11	
H91/h11	
H92/d11	
H93/f11	
H94/g11	
H95/h11	
H96/d11	
H97/f11	
H98/g11	
H99/h11	
H100/d11	

FIBER CONTROLS
 A FULL SERVICE CORPORATION
 1000 W. 10TH ST. SUITE 100
 DENVER, CO 80202

NAME: DSPREY METRIC
 HVD-130 x 60
 TOP INLET ASSY
 PART NO. A53000032

